

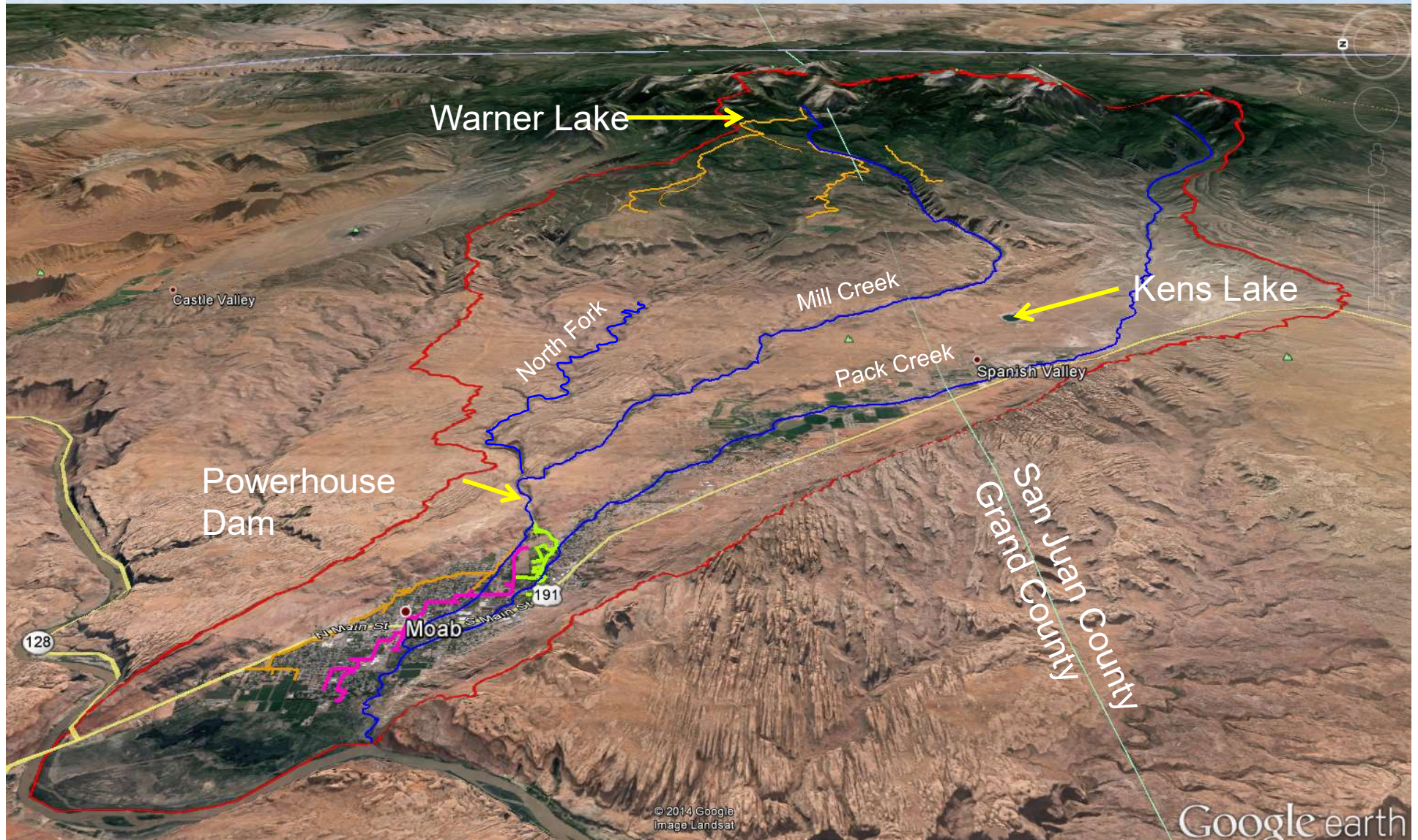


# Utah Division of Water Rights



## REVIEW OF GROUNDWATER MONITORING MOAB / SPANISH VALLEY - CENTRAL

# Moab / Spanish Valley Watershed





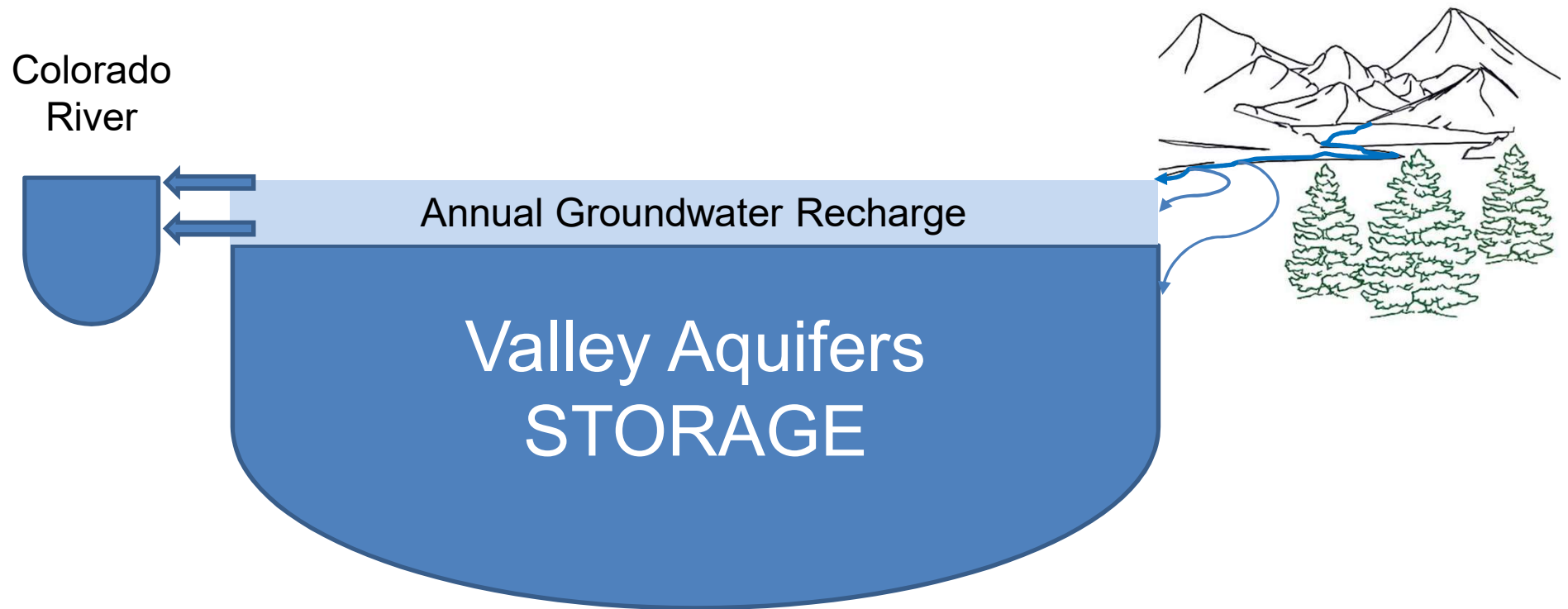
# Groundwater Management Plans

- Est. in Section 73-5-15 Utah Code

## Objectives:

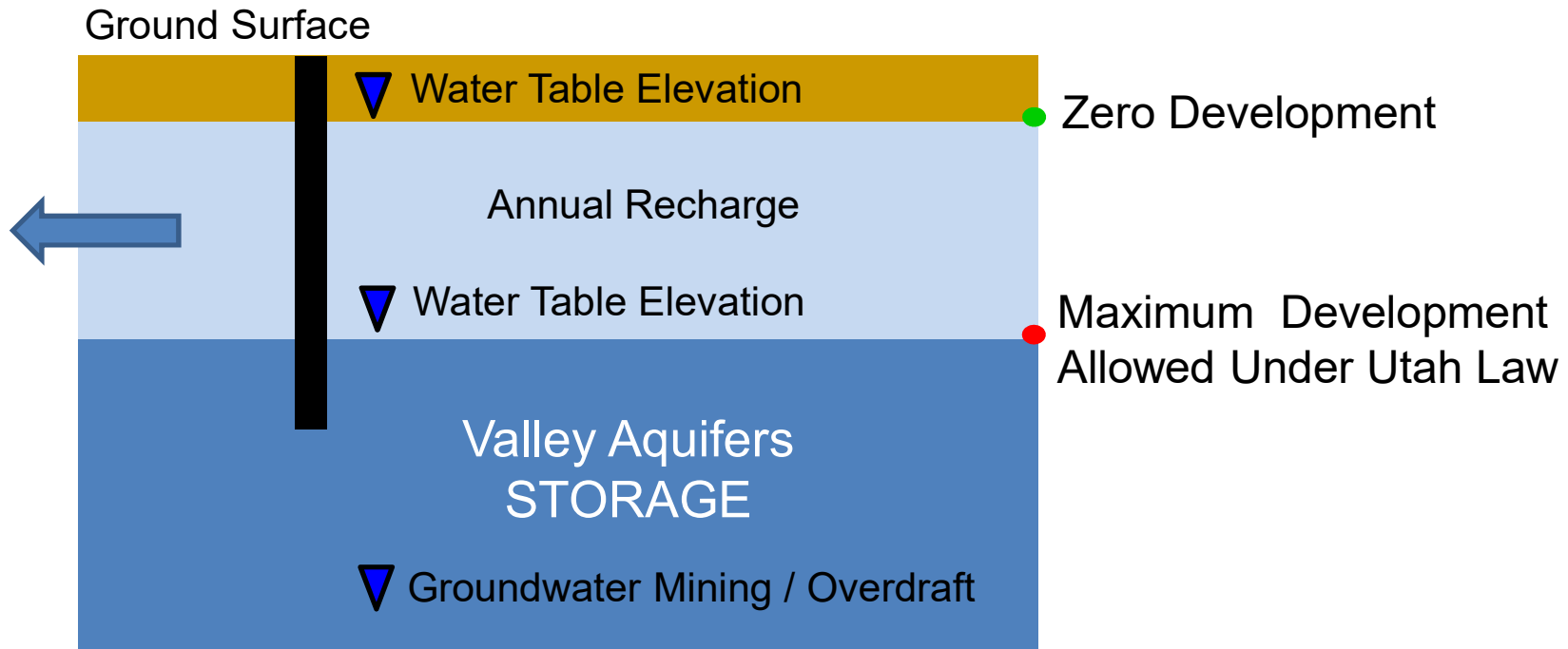
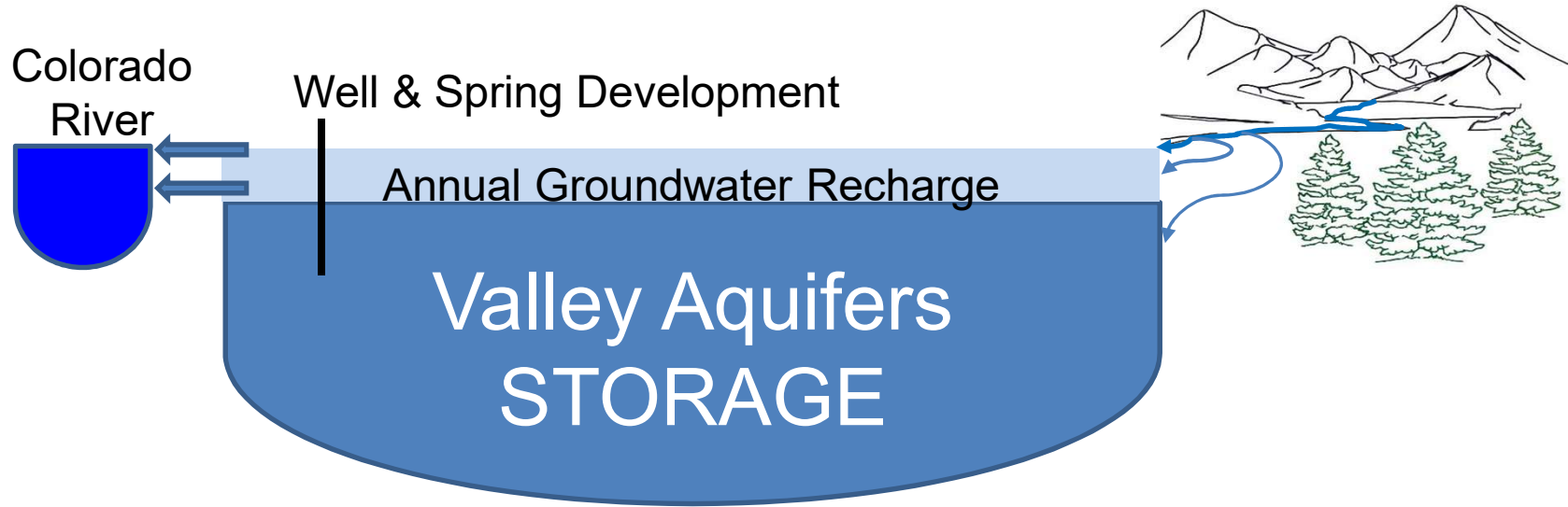
- Limit groundwater withdrawals to safe yield.
- Protect physical integrity of the aquifer.
- Protect water quality.

“Safe Yield” means the amount of groundwater that can be withdrawn from a groundwater basin over a period of time without exceeding the long-term recharge of the basin or unreasonably affecting the basin’s physical and chemical integrity.



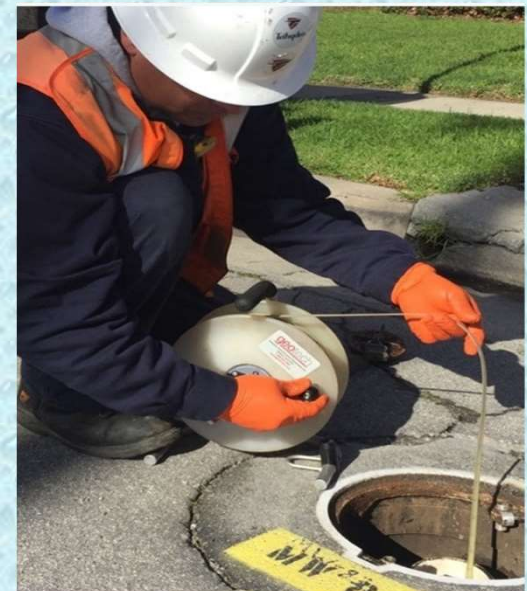
**USGS "Evaluation of Groundwater Resources in the Spanish Valley Watershed, Grand and San Juan Counties, Utah"**  
**Scientific Investigations Report 2019-5062, pg. 55**

- Recharge: 9,550 – 30,000 acre-feet
- Discharge: 14,000 – 16,000 acre-feet



# What Should Be Measured?

- Spring Flows
- Stream Flows
- Water Quality
- Water Table Elevations



# Who's collecting the Data?

- USGS
- Moab City
- Moab Irrigation Company
- Grand Water & Sewer SA
- San Juan Spanish Valley SSD
- Division of Water Quality
- Division of Water Rights



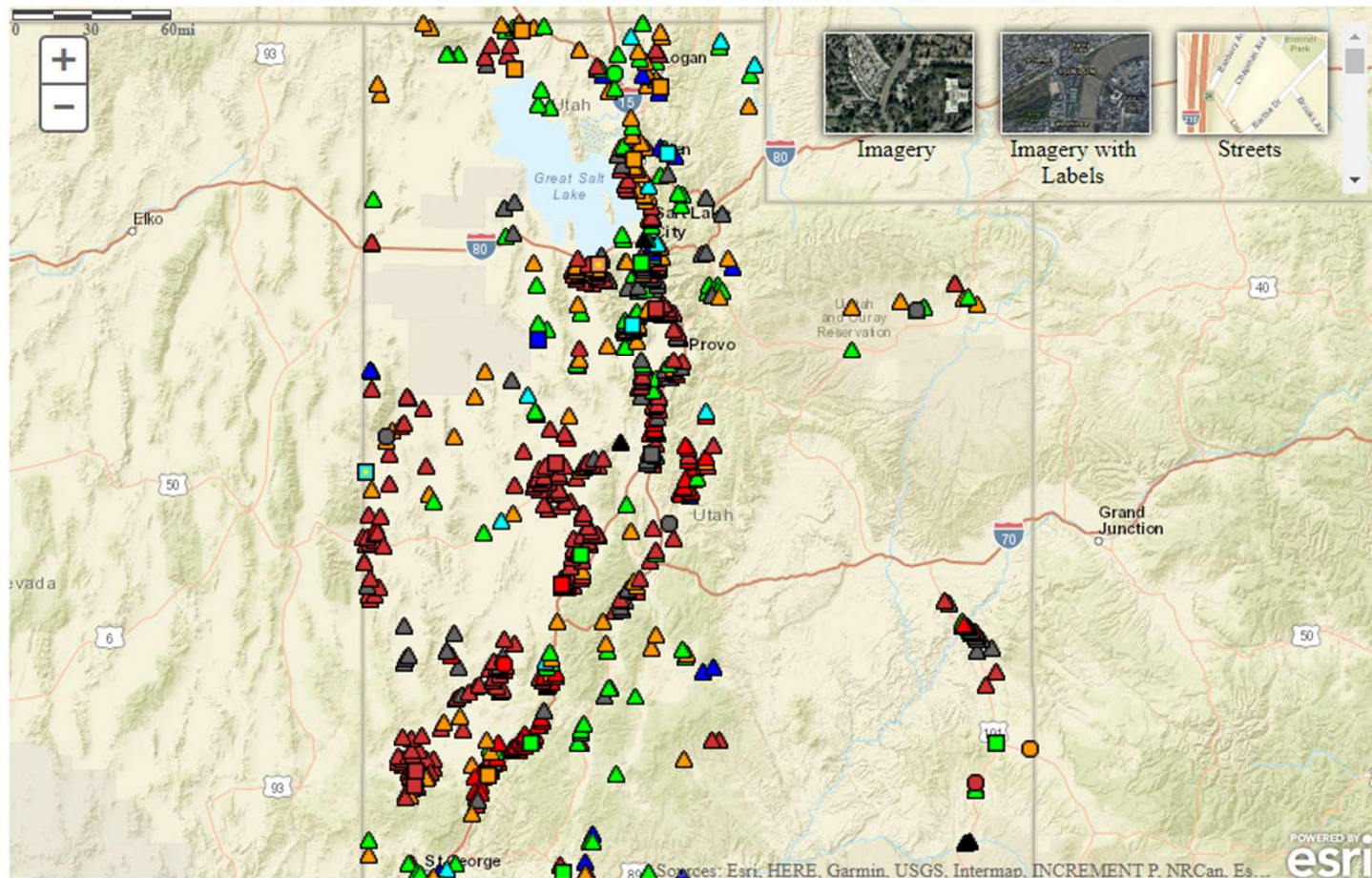
CENTRAL





### Utah Active Water Level Network

Click site symbol to open information pop-up. Click Station ID in pop-up for county information and site selection.  
Map loading slowly? Try a different browser. Web browser performance varies significantly.

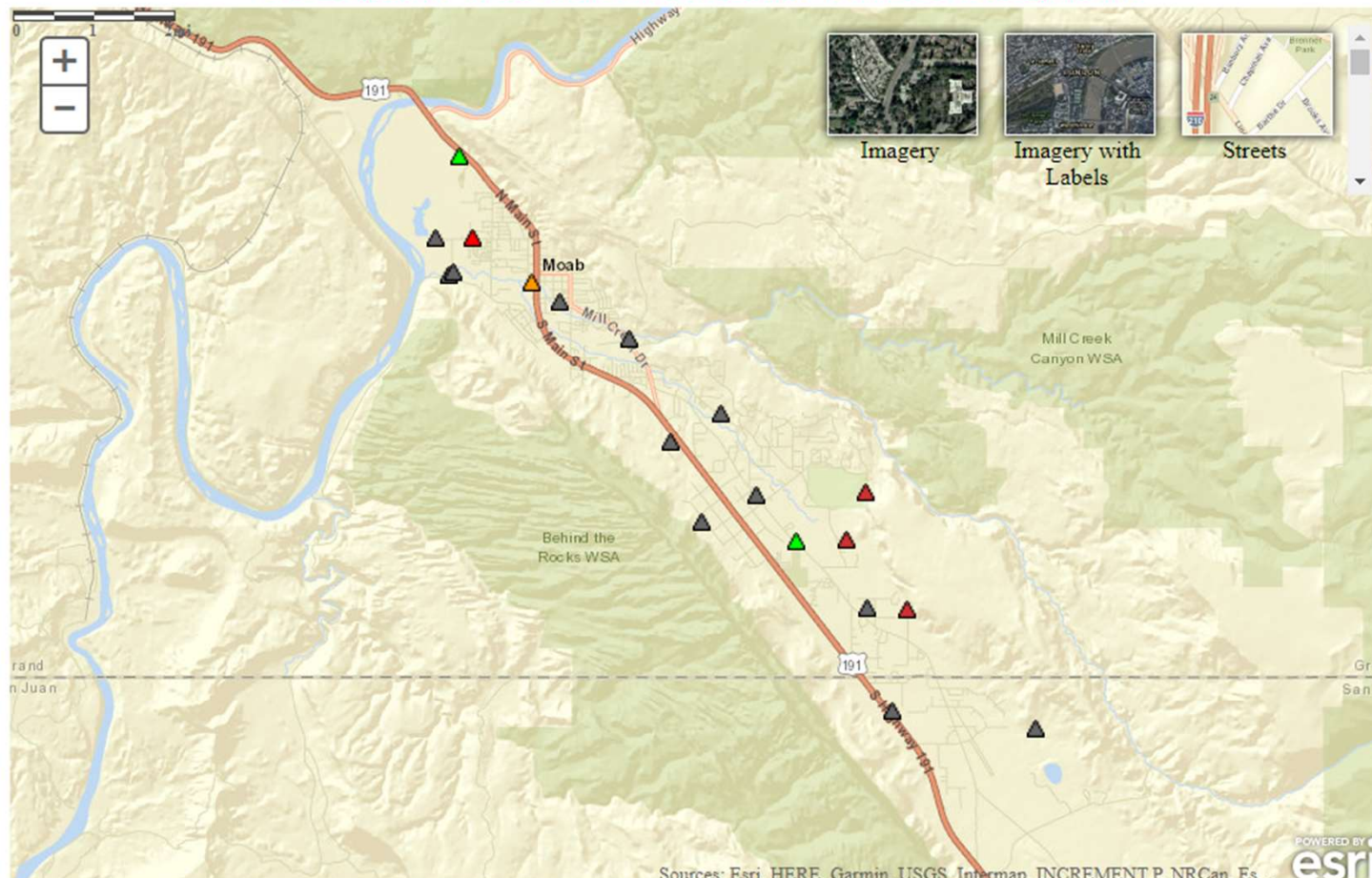


Explanation - Percentile classes (symbol color based on most recent measurement)						Wells		Springs	
<span style="color: red;">●</span>	<span style="color: orange;">●</span>	<span style="color: green;">●</span>	<span style="color: cyan;">●</span>	<span style="color: blue;">●</span>	<span style="color: black;">●</span>	<span style="border: 1px solid black; border-radius: 50%; display: inline-block; width: 10px; height: 10px;"></span>	<span style="border: 1px solid black; border-radius: 50%; display: inline-block; width: 10px; height: 10px;"></span>	<span style="border: 1px solid black; display: inline-block; width: 10px; height: 10px;"></span>	<span style="border: 1px solid black; display: inline-block; width: 10px; height: 10px;"></span>
Low	<10	10-24	25-75	76-90	>90	High	Not Ranked	Real-Time	Continuous
	Much Below Normal	Below Normal	Normal	Above Normal	Much Above Normal			Periodic Measurements	



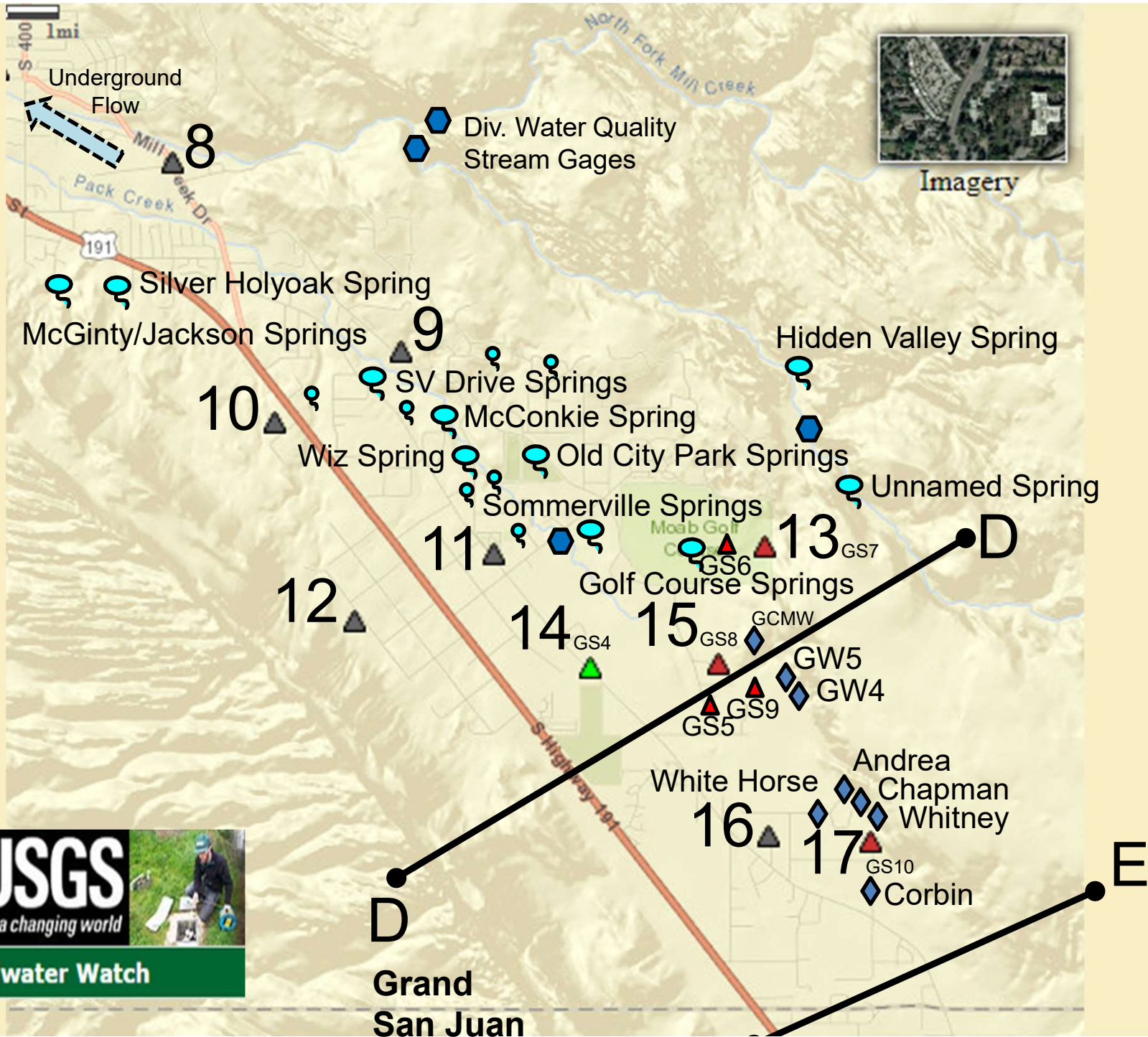
### Utah Active Water Level Network

Click site symbol to open information pop-up. Click Station ID in pop-up for county information and site selection.  
 Map loading slowly? Try a different browser. Web browser performance varies significantly.

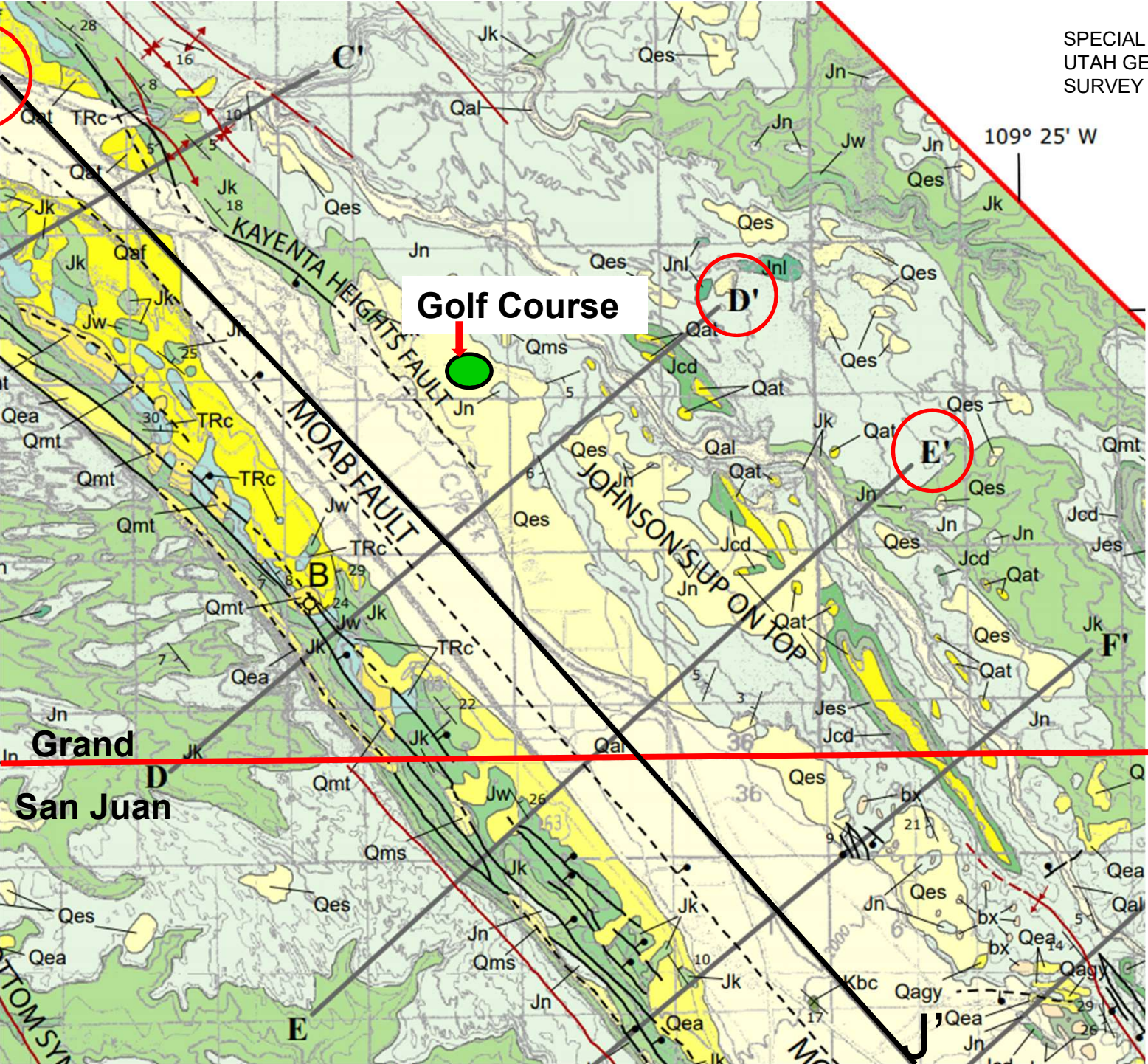


Sources: Esri, HERE, Garmin, USGS, Intermap, INCREMENT P, NRCan, Es...

Explanation - Percentile classes (symbol color based on most recent measurement)							Wells		Springs	
●	●	●	●	●	●	●	○	□	□	□
Low	<10	10-24	25-75	76-90	>90	High	Not Ranked	Real-Time	Continuous	Periodic Measurements
	Much Below Normal	Below Normal	Normal	Above Normal	Much Above Normal					



**J'**



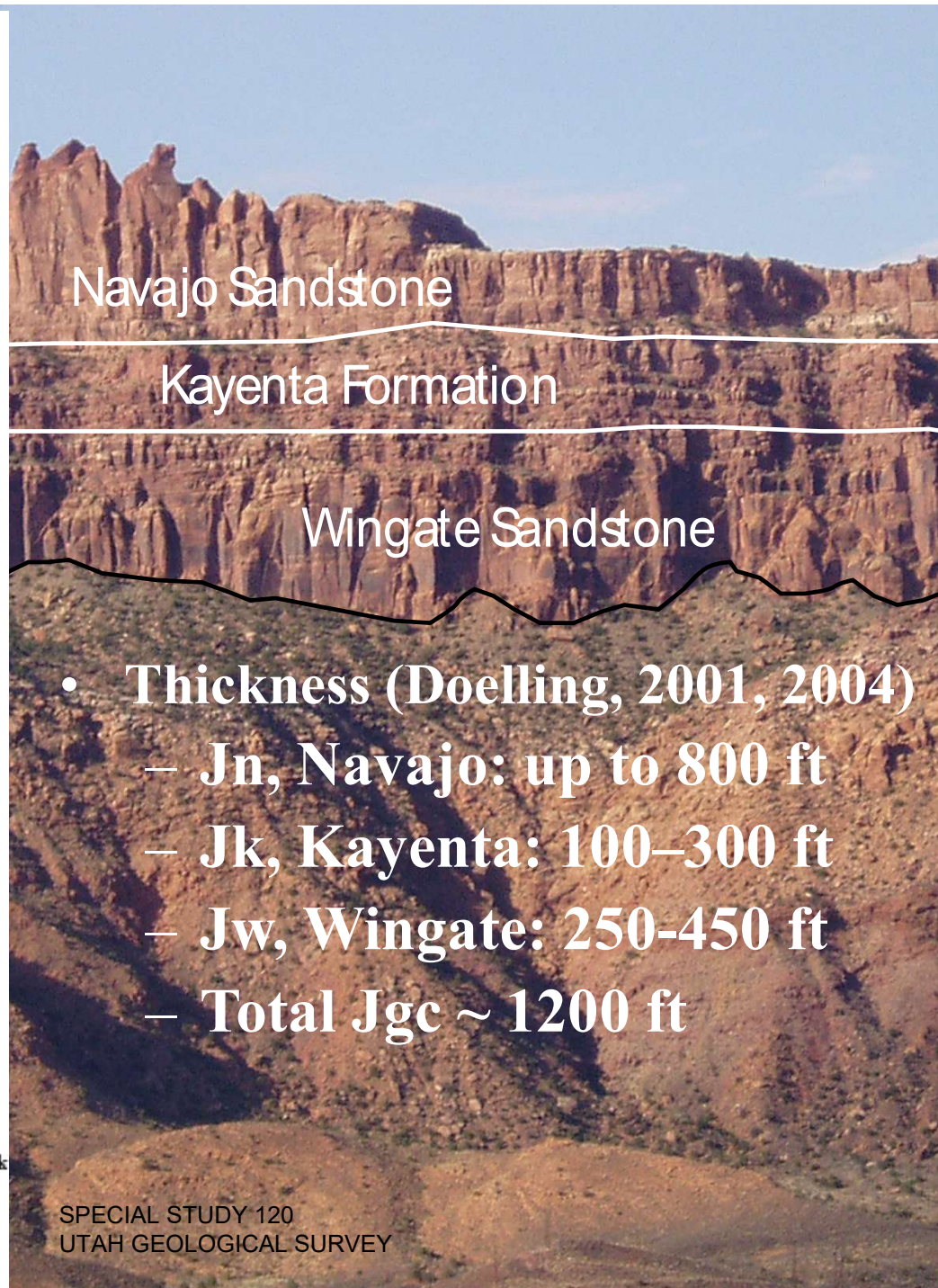
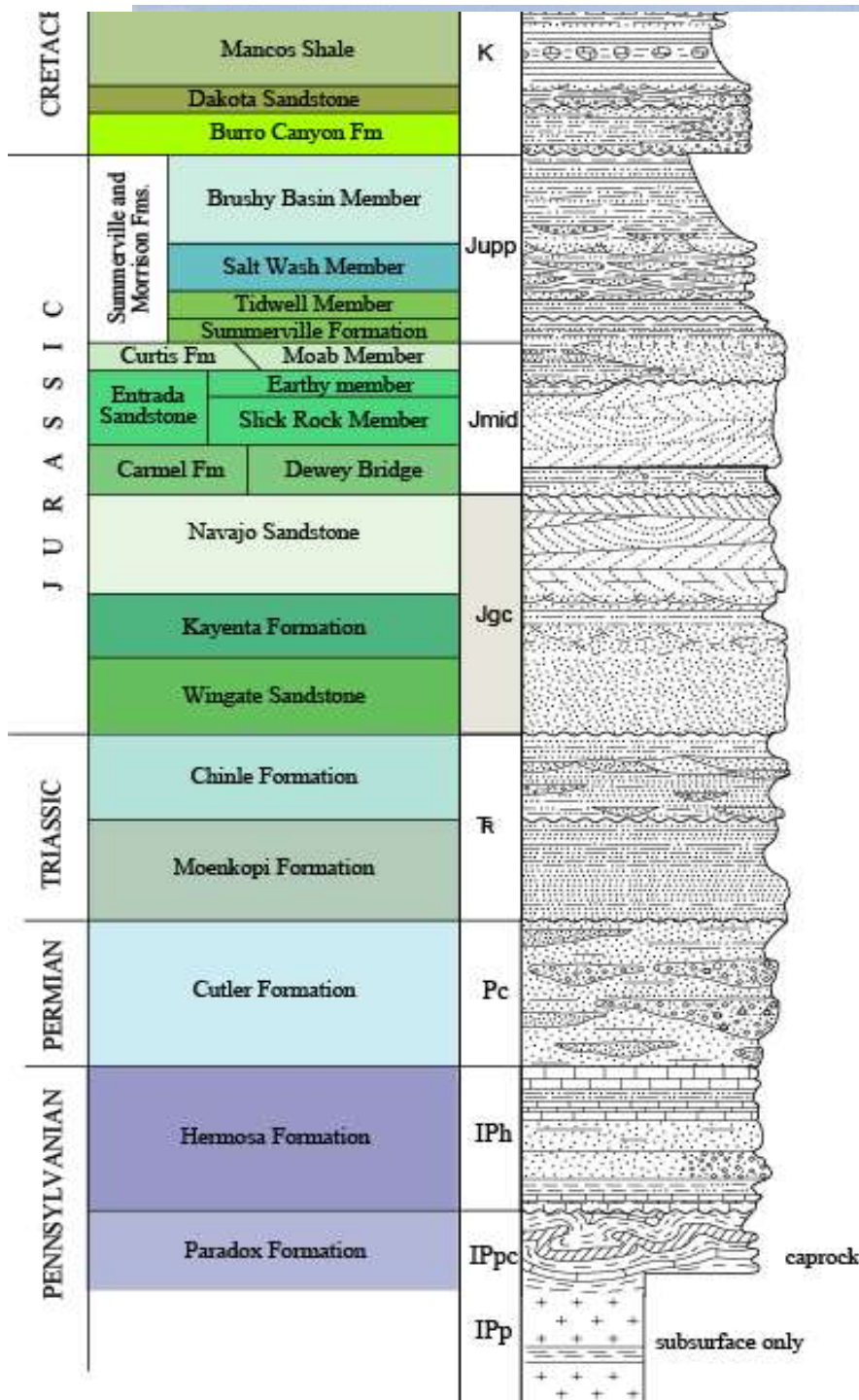
**Golf Course**

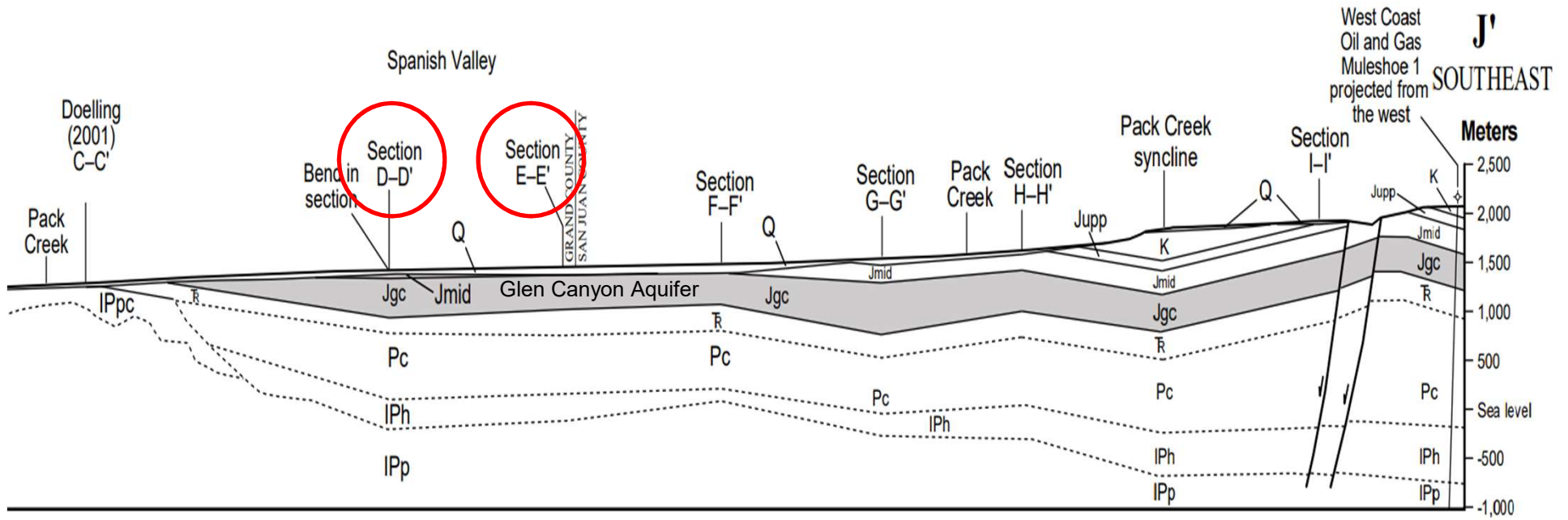
**D'**

**E'**

**Grand  
San Juan D**

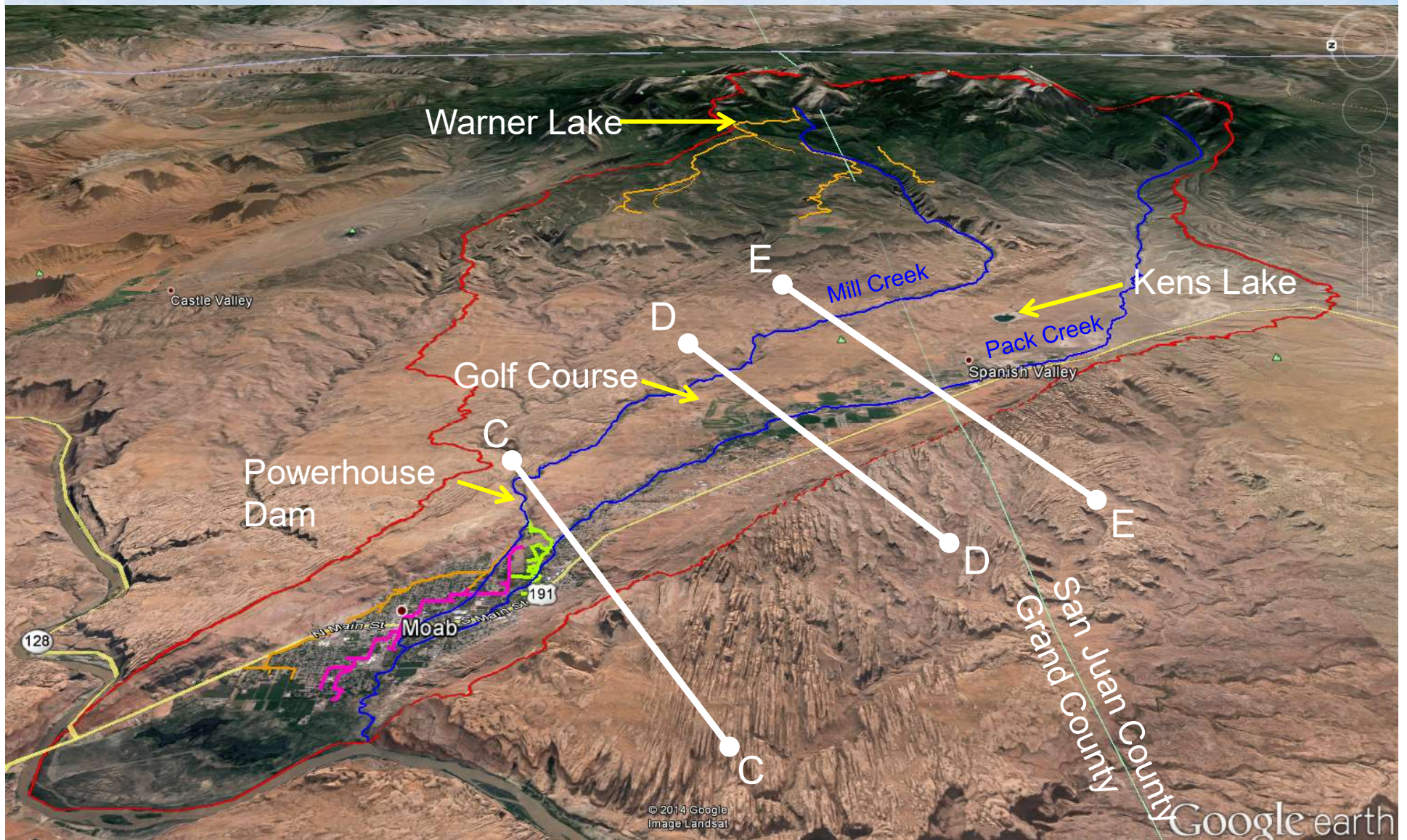
**AT TOM SY**



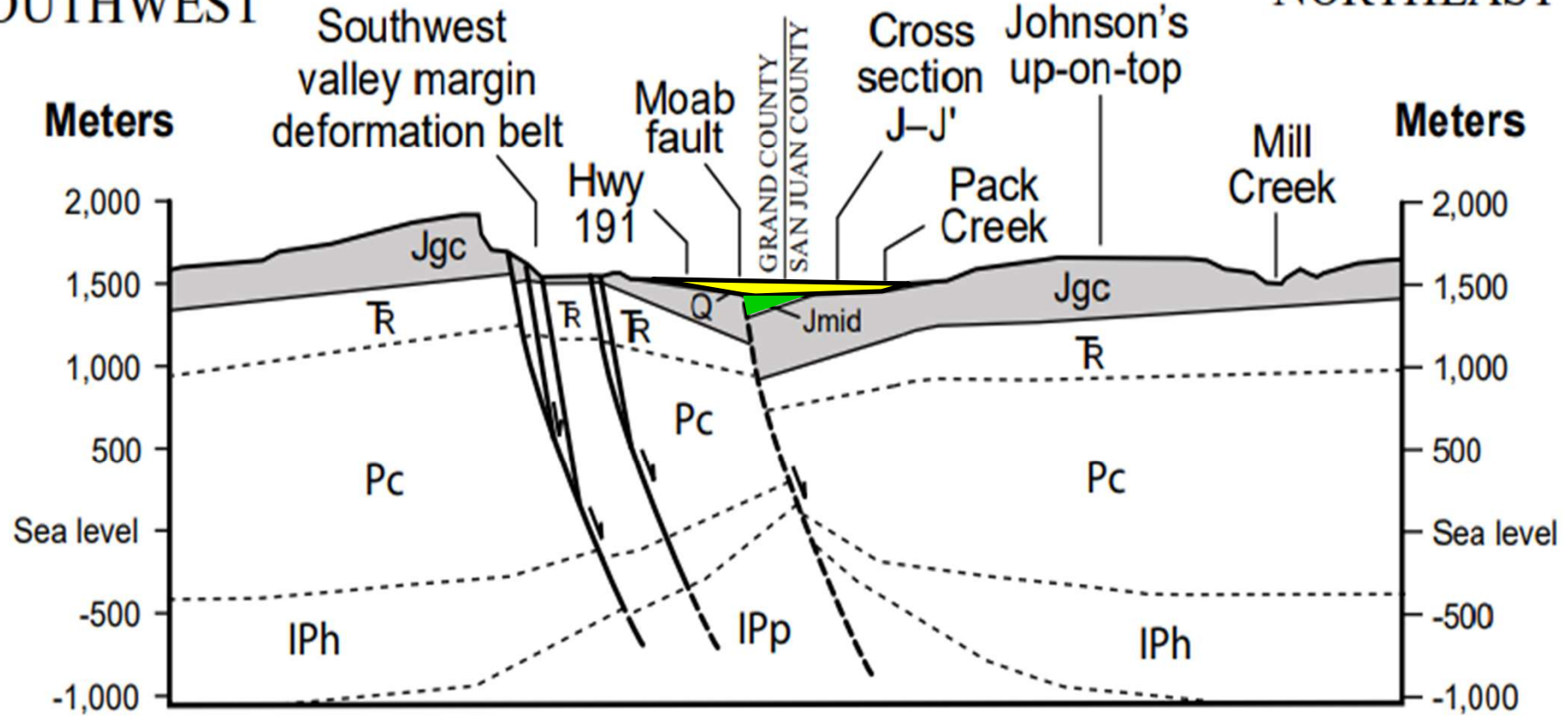


SPECIAL STUDY 120  
 UTAH GEOLOGICAL SURVEY

# Moab / Spanish Valley Watershed

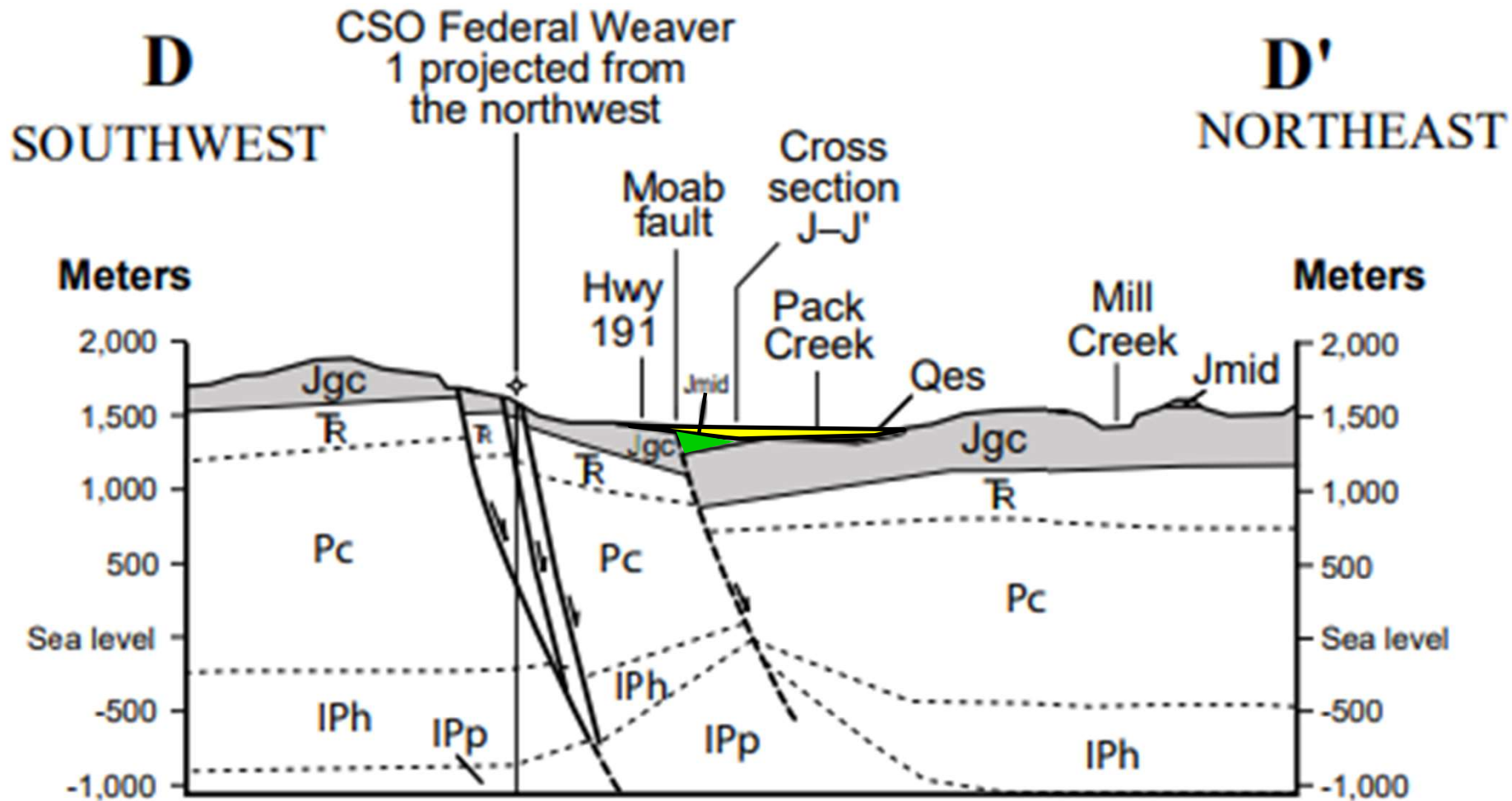


**E** Moab Valley **E'**  
**SOUTHWEST** NORTHEAST

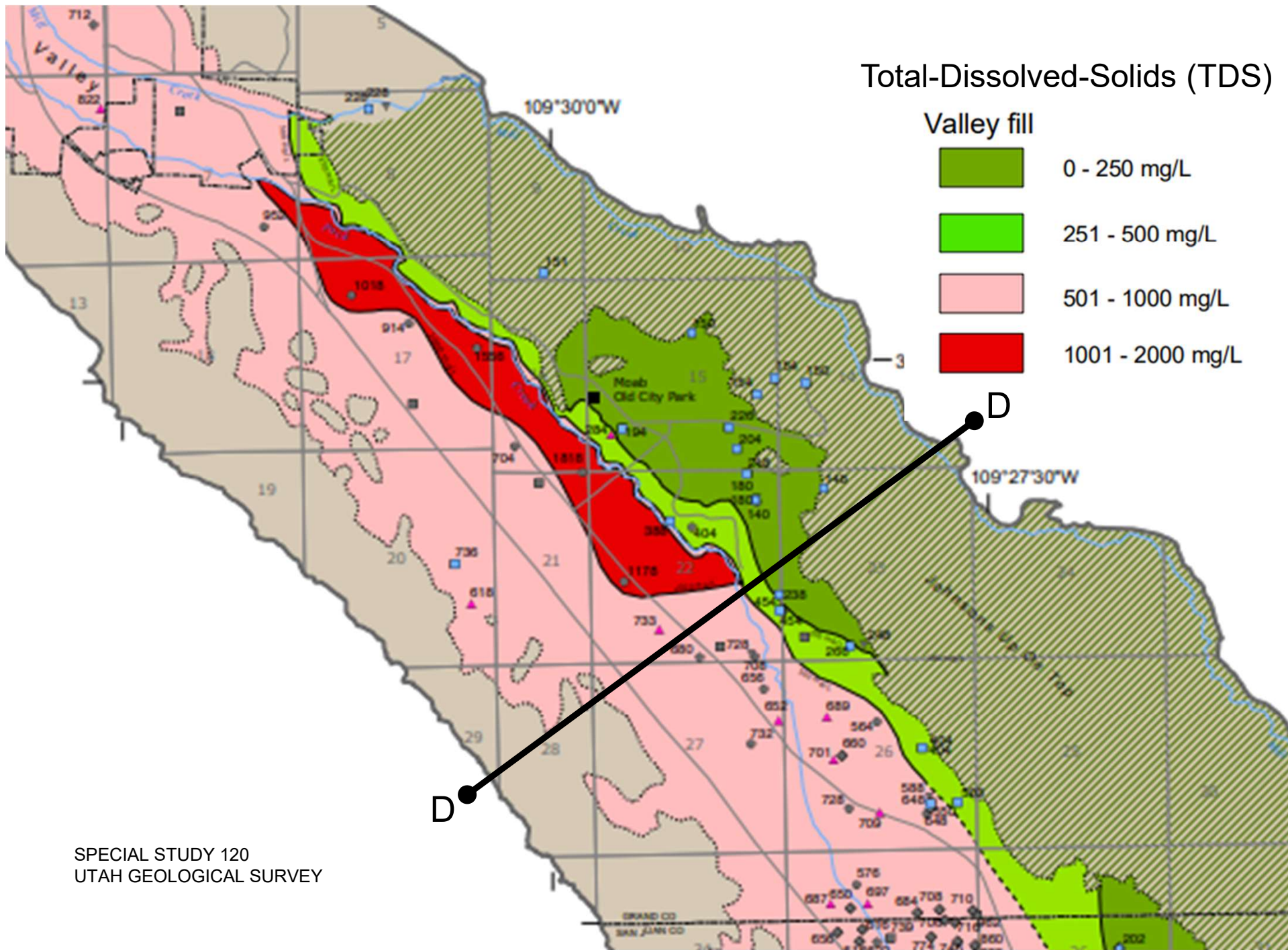


- Valley Fill – Sand / Gravel
- Carmel / Dewey Bridge





- Valley Fill – Sand / Gravel
- Carmel / Dewey Bridge



SPECIAL STUDY 120  
 UTAH GEOLOGICAL SURVEY

# Utah Division of Water Rights

Groundwater Level Trend Viewer

Region:

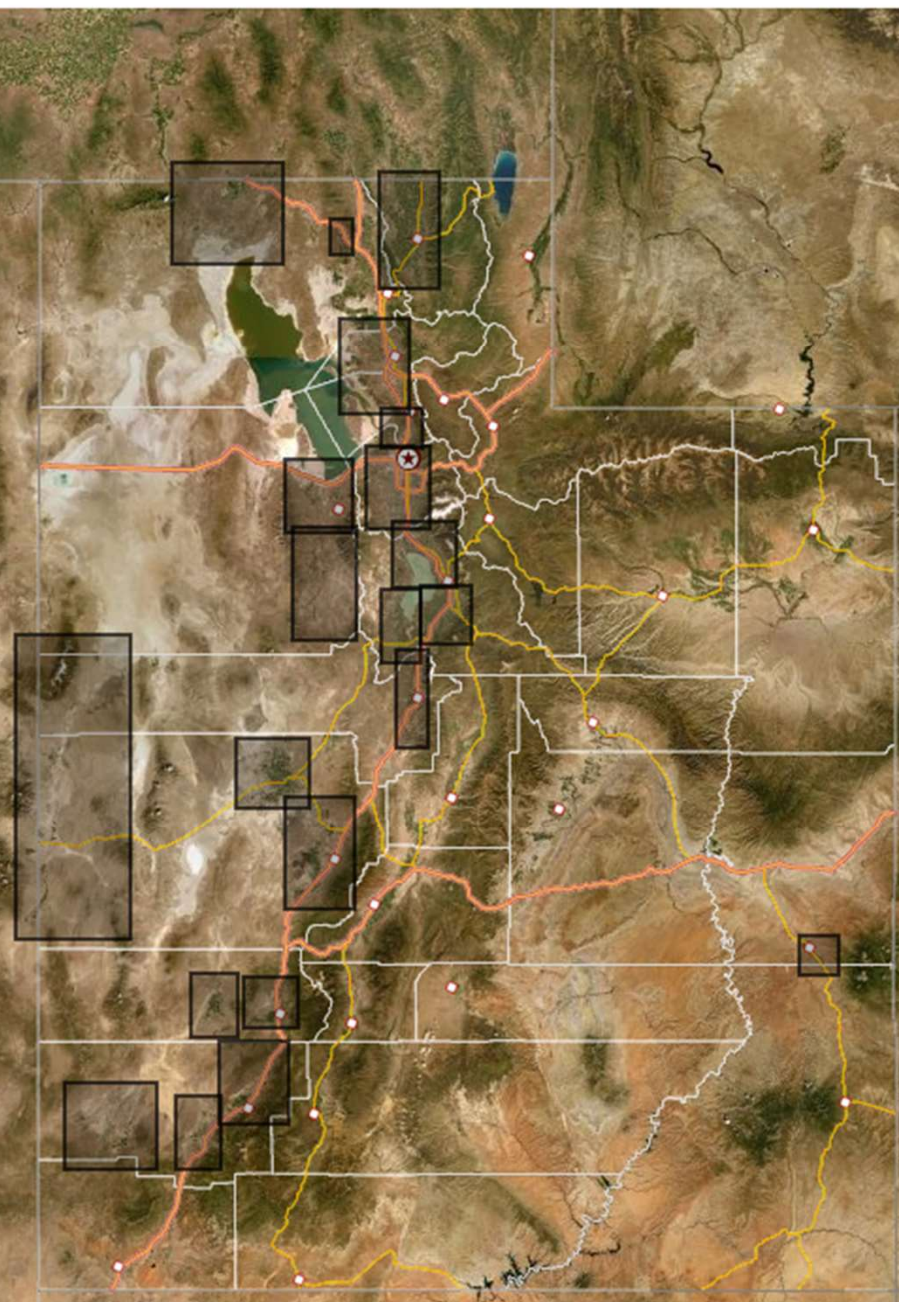
Options

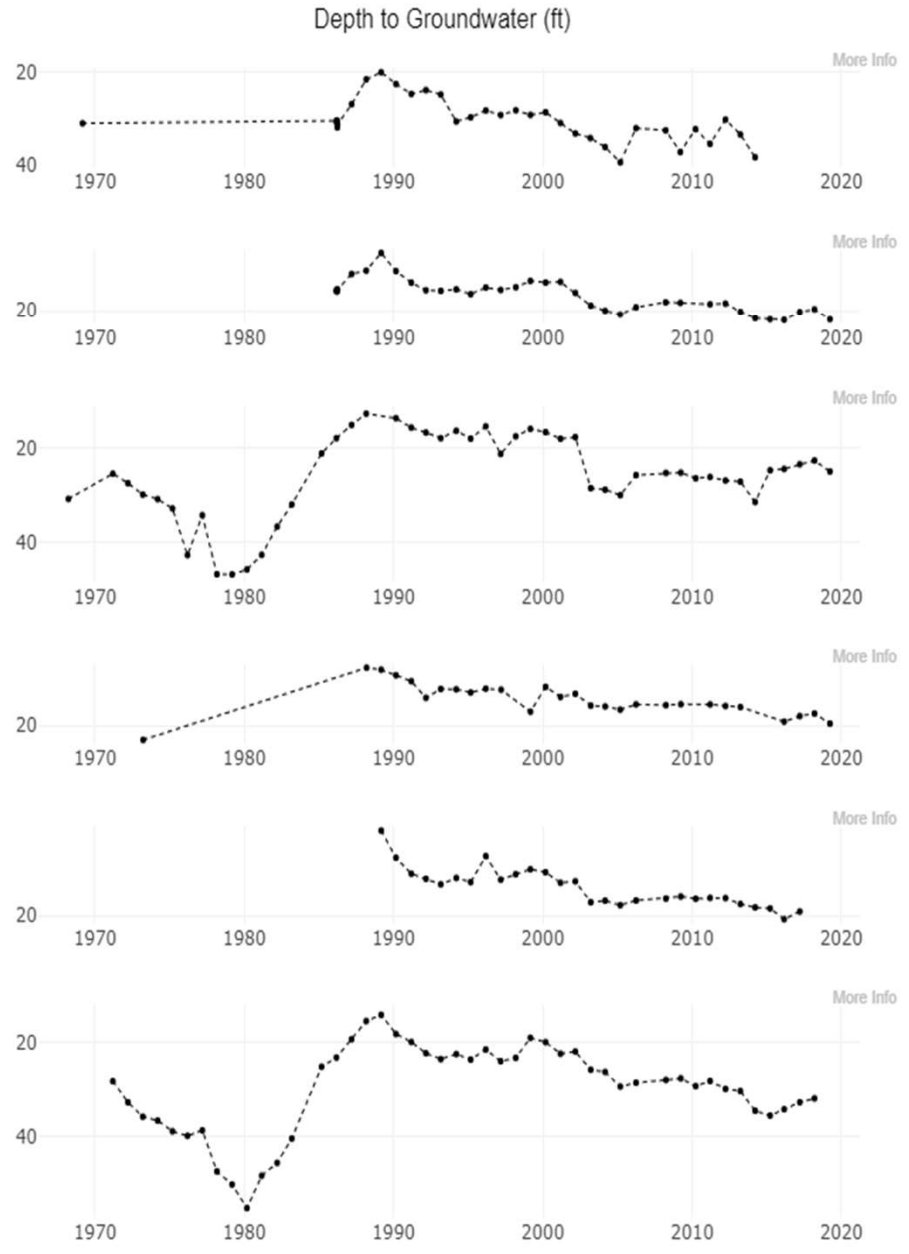
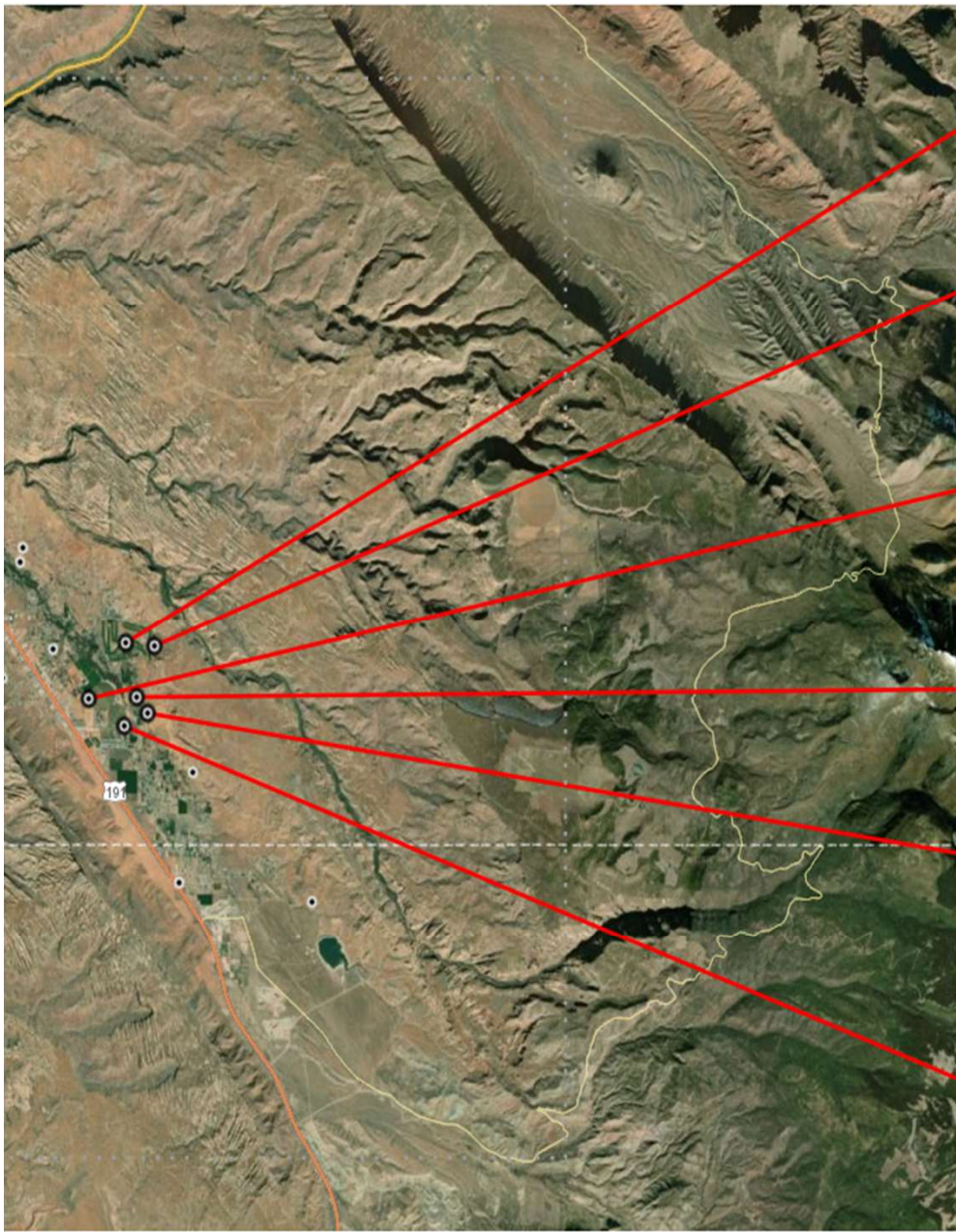
Map Options

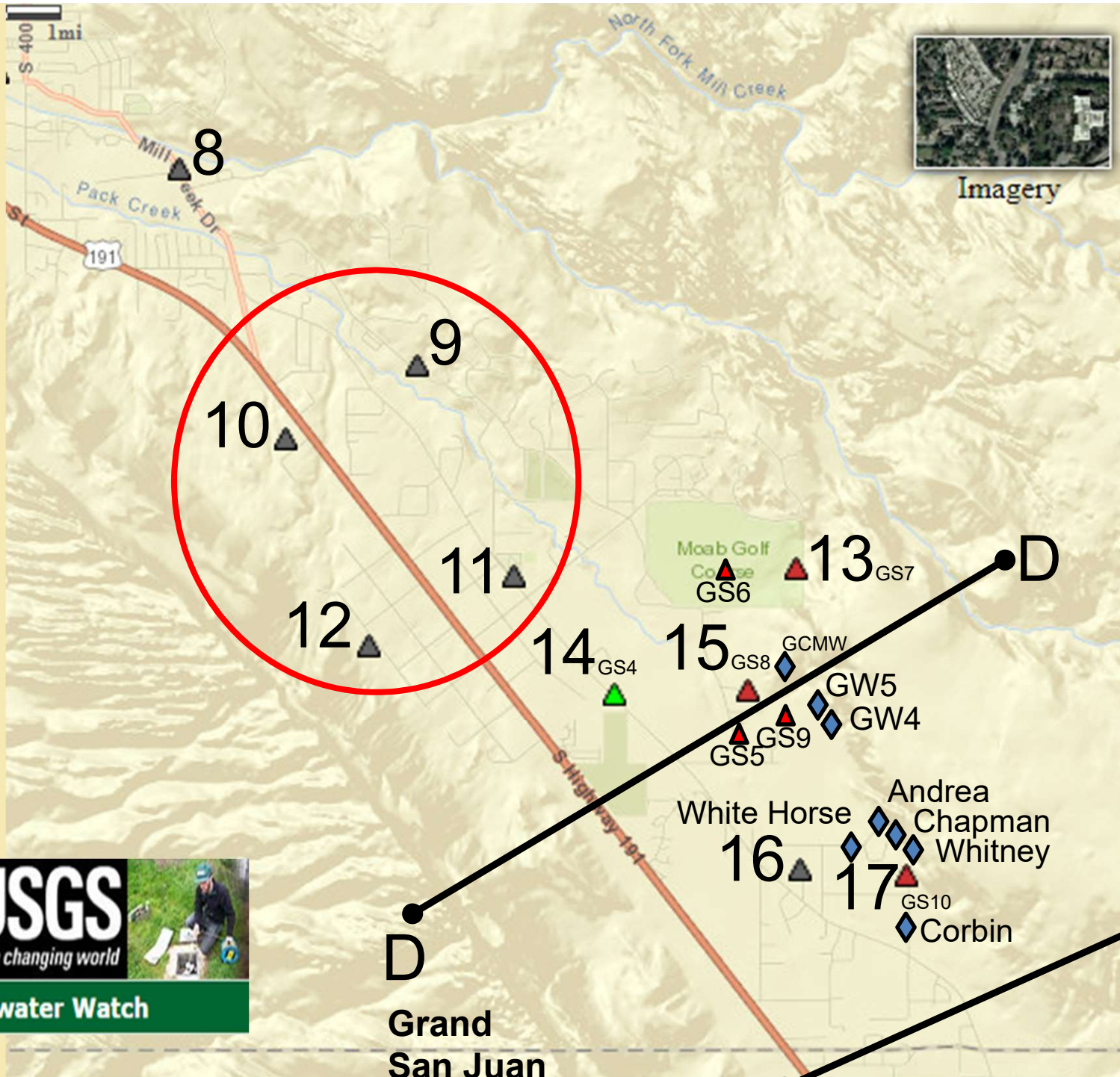


## Areas in Utah

- [Beaver Valley](#)
- [Beryl-Enterprise](#)
- [Bothwell Area](#)
- [Cedar City Valley](#)
- [Curlew Valley](#)
- [Cache Valley](#)
- [Delta Area](#)
- [East Shore \(Bountiful\)](#)
- [East Shore \(Weber-Delta\)](#)
- [Goshen Valley](#)
- [Juab Valley](#)
- [Milford Valley](#)
- [Moab Area](#)
- [Pahvant Valley](#)
- [Parowan Valley](#)
- [Rush Valley](#)
- [Salt Lake Valley](#)
- [Snake Valley](#)
- [Tooele Valley](#)
- [Utah Valley \(Southern\)](#)
- [Utah Valley \(Northern\)](#)



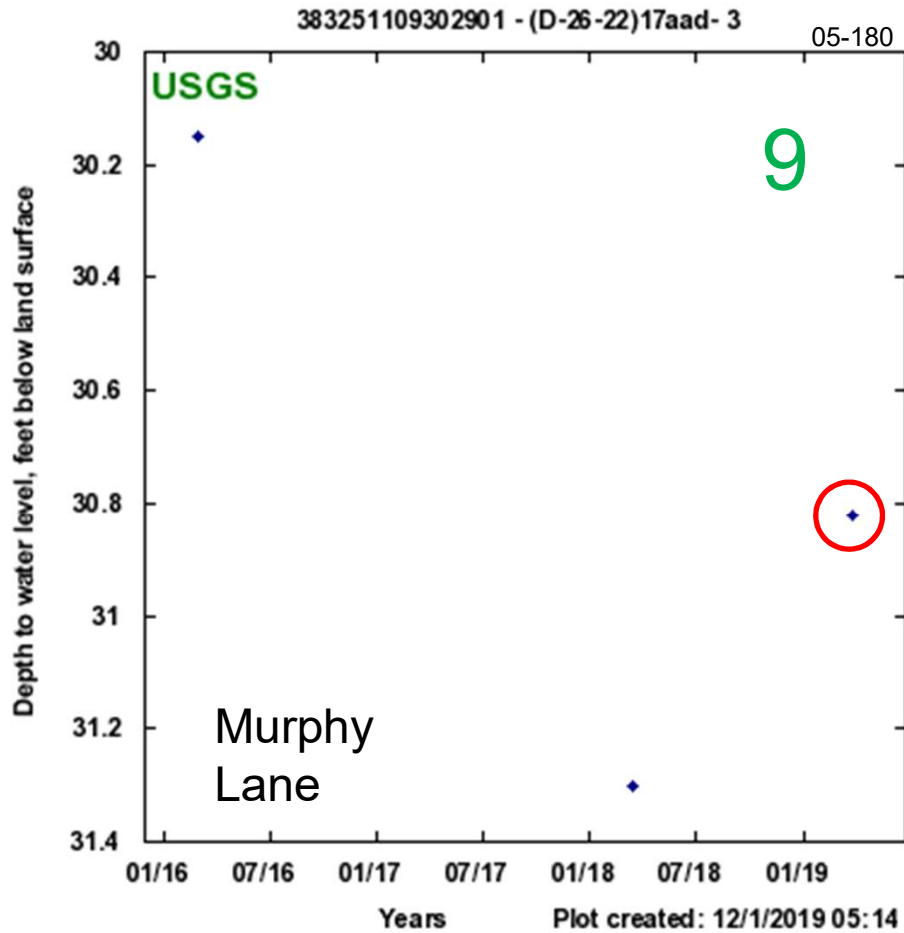




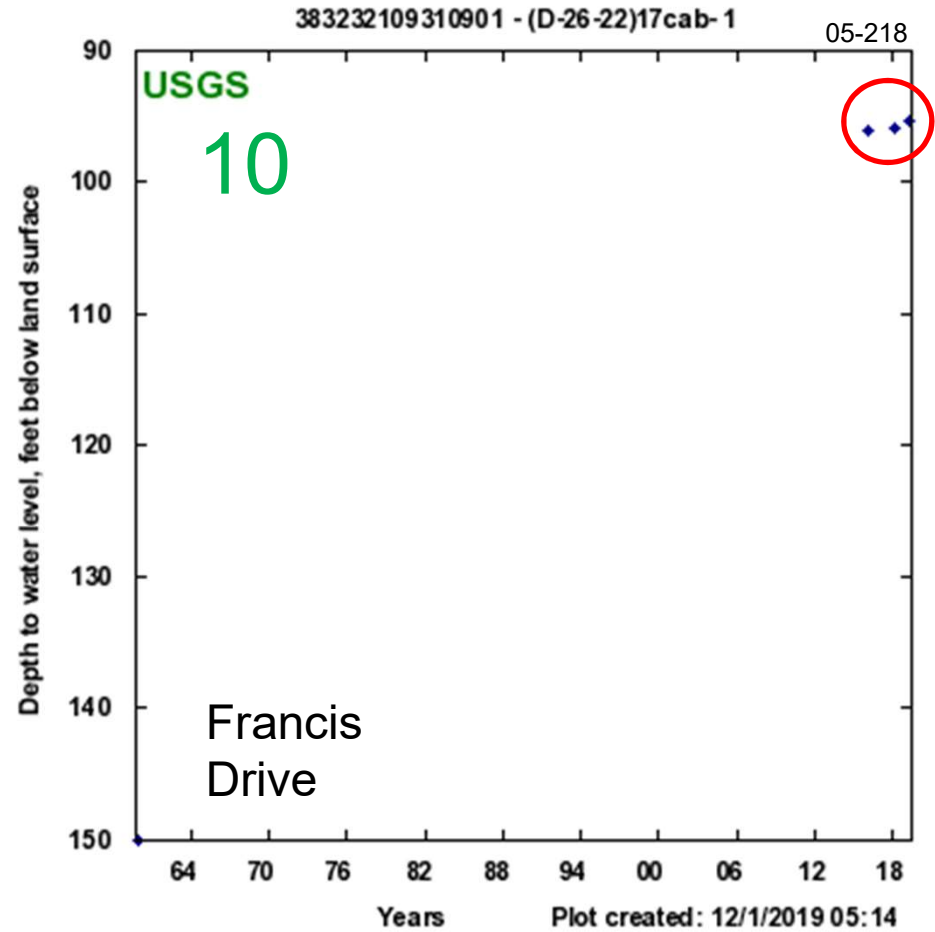
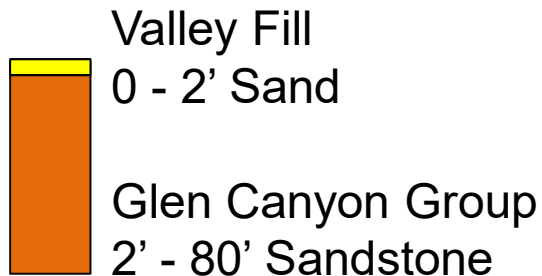
Grand  
 San Juan



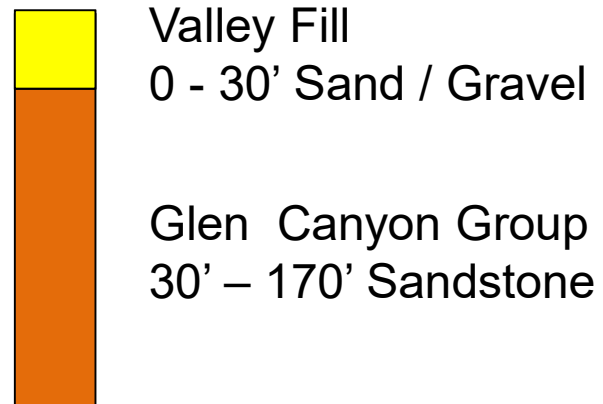
Imagery



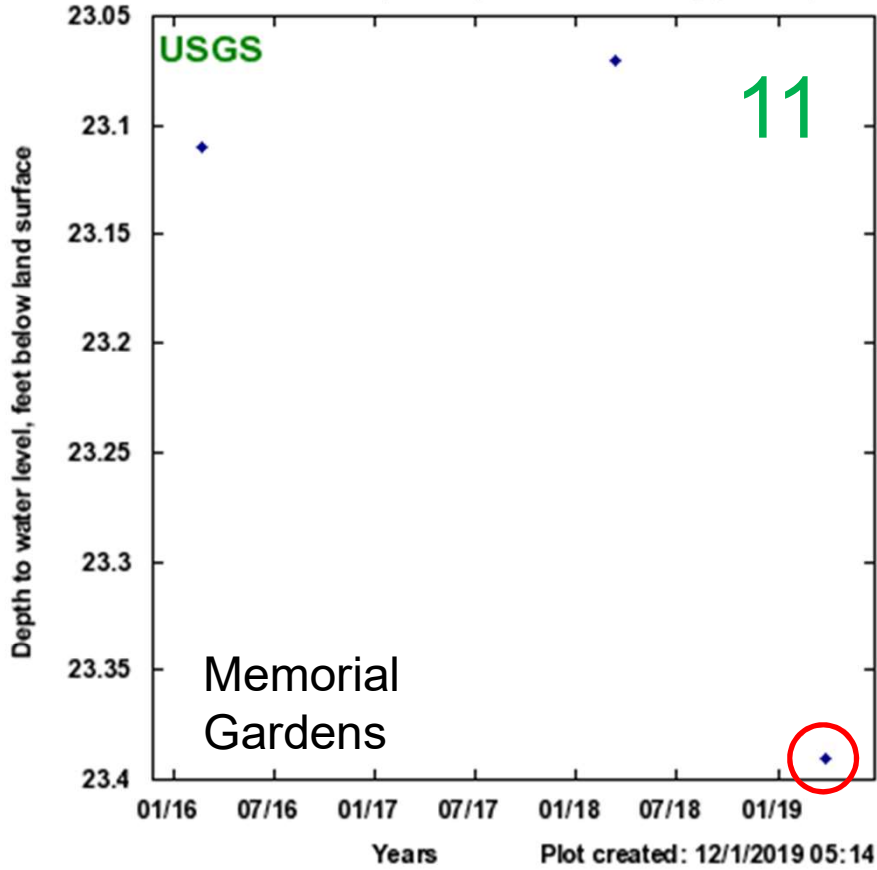
- ◆ Approved water-level measurement
- ◆ Provisional water-level measurement



- ◆ Approved water-level measurement
- ◆ Provisional water-level measurement



383201109295301 - (D-26-22)21aL10- 1 formerly (D-26-22)16d 05-268



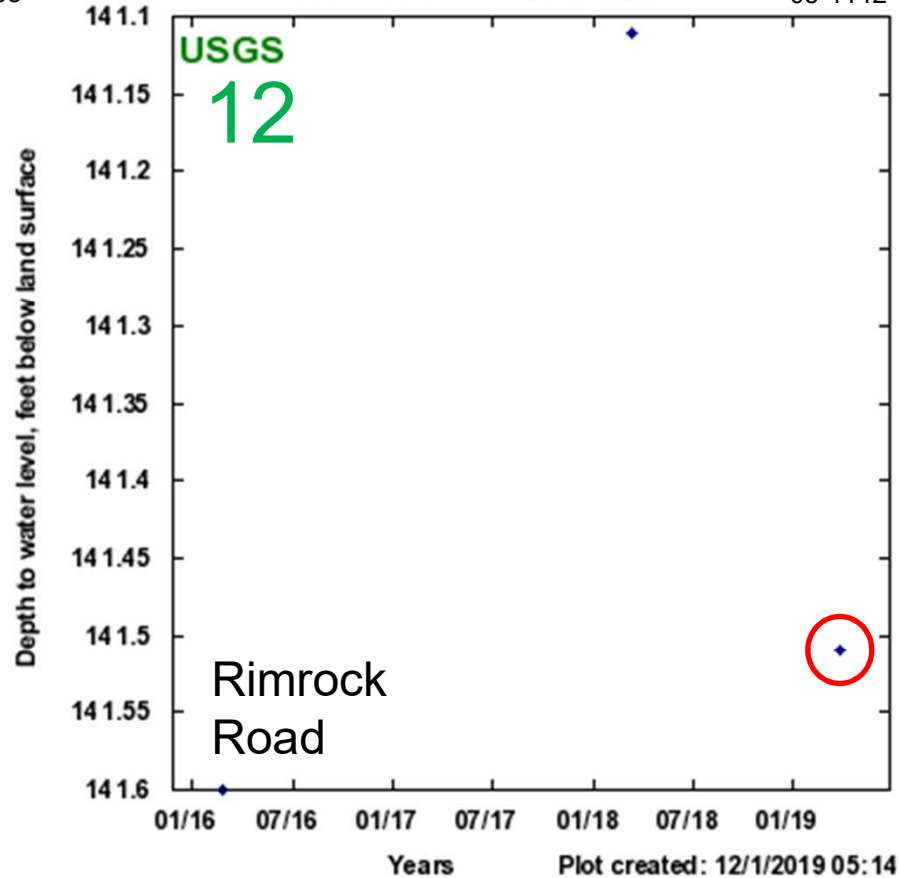
- ◆ Approved water-level measurement
- ◆ Provisional water-level measurement



No Well Log

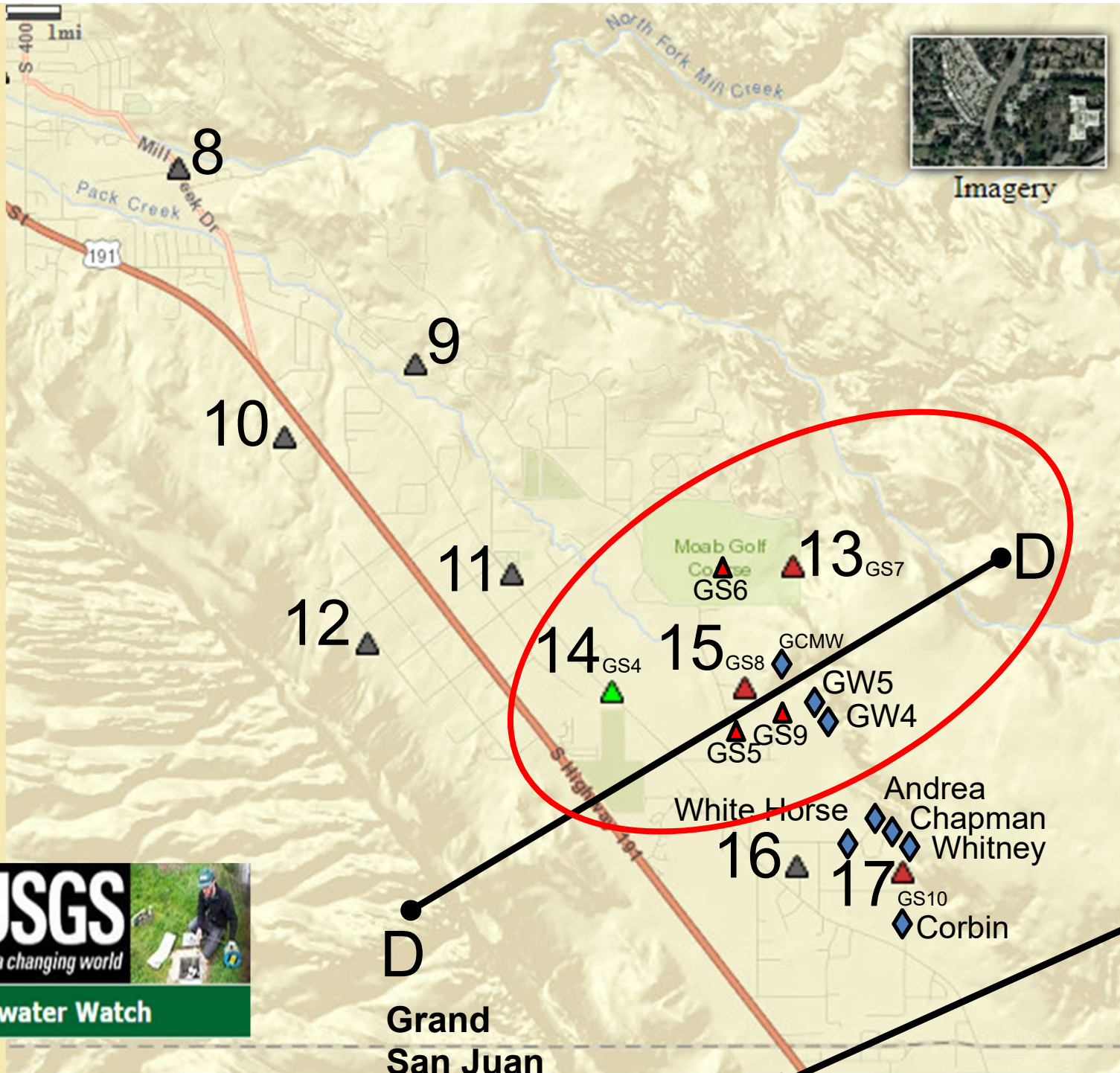
Nearest Well: 05-486  
0 – 65' Sand / Gravel

383141109304401 - (D-26-22)20dL86- 1 05-1142



- ◆ Approved water-level measurement
- ◆ Provisional water-level measurement





Imagery



Grand San Juan

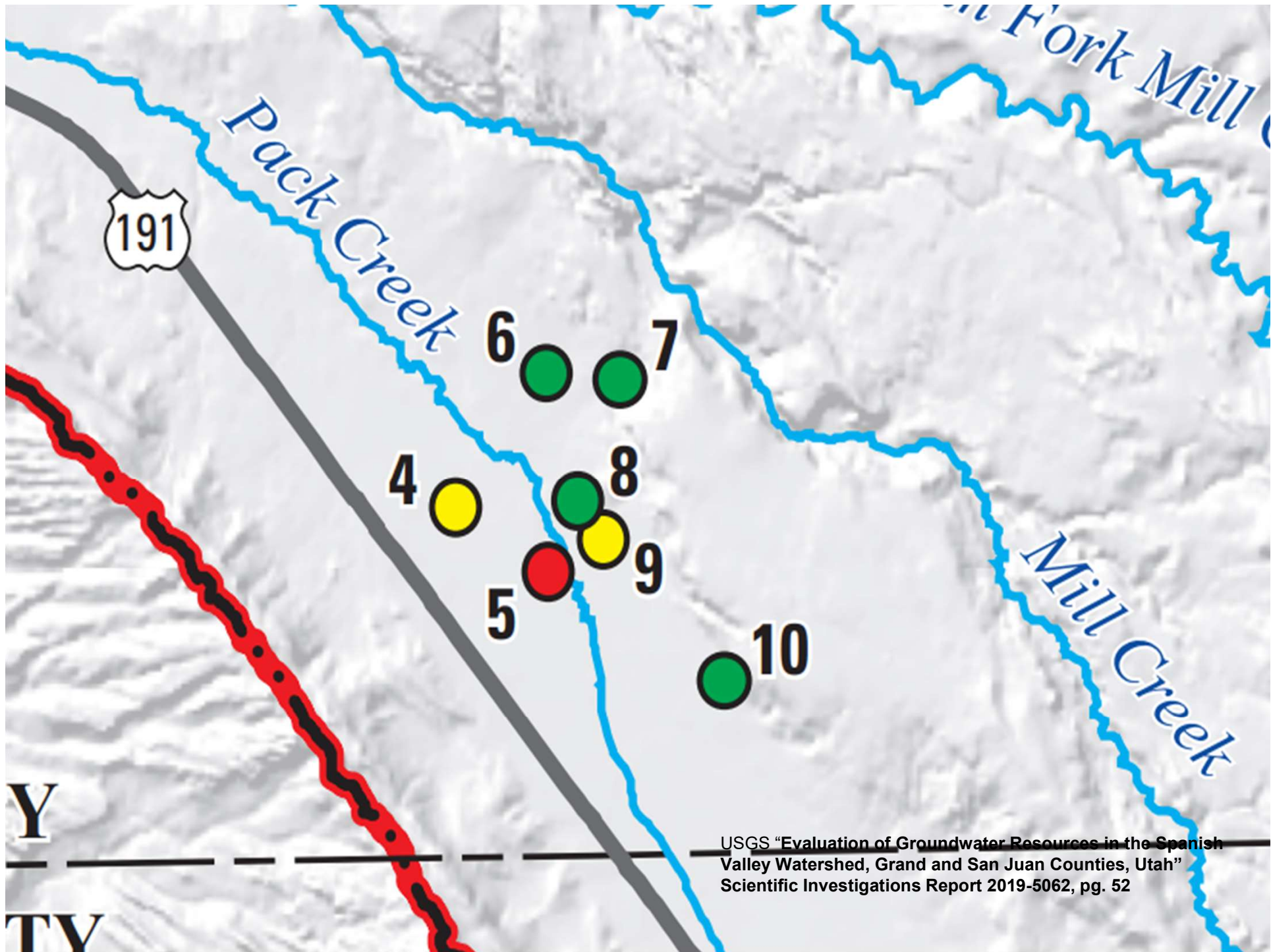
D

E

D

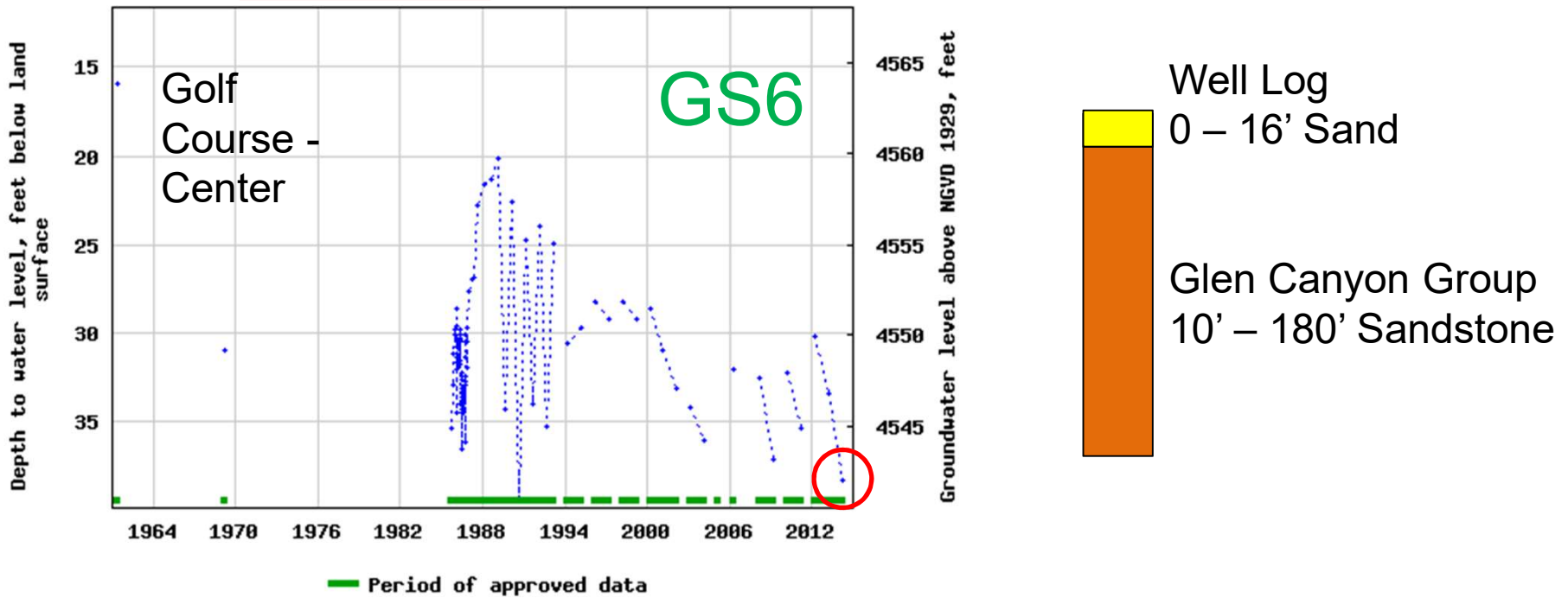






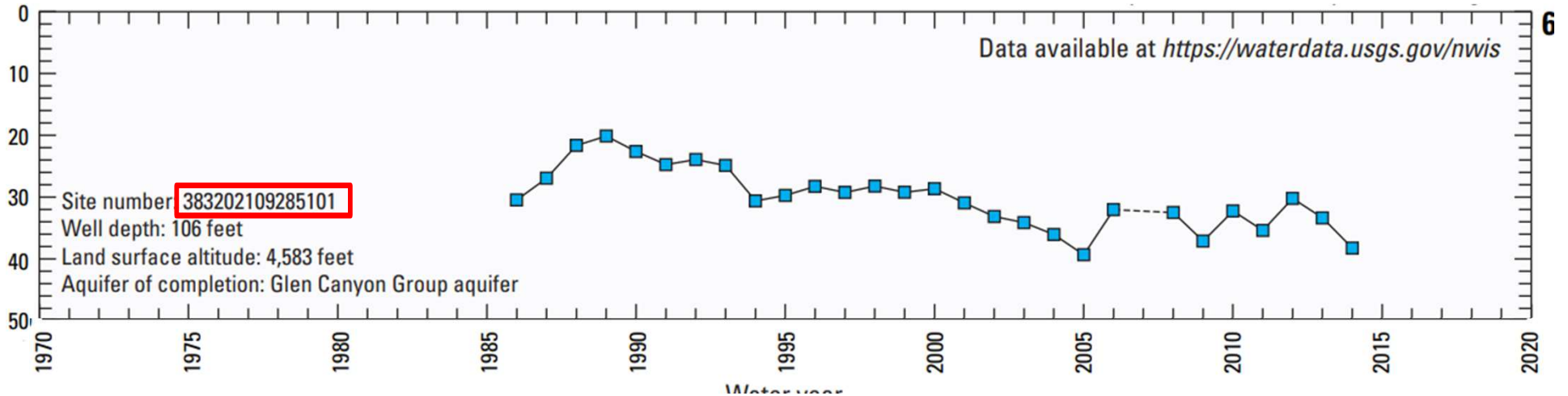
USGS "Evaluation of Groundwater Resources in the Spanish Valley Watershed, Grand and San Juan Counties, Utah" Scientific Investigations Report 2019-5062, pg. 52

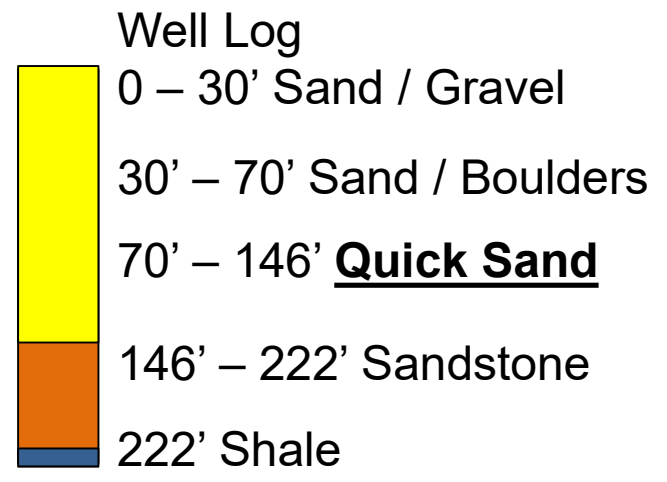
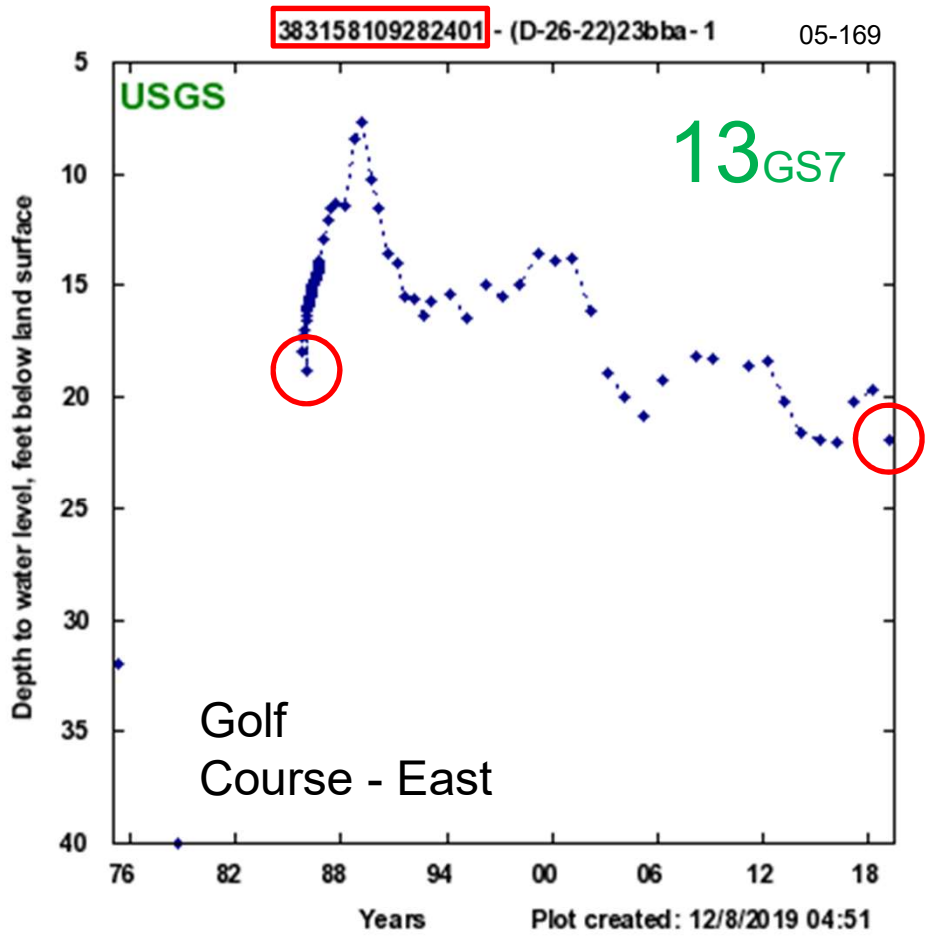
USGS 383202109285101 (0-26-22)22aab- 1 05-336



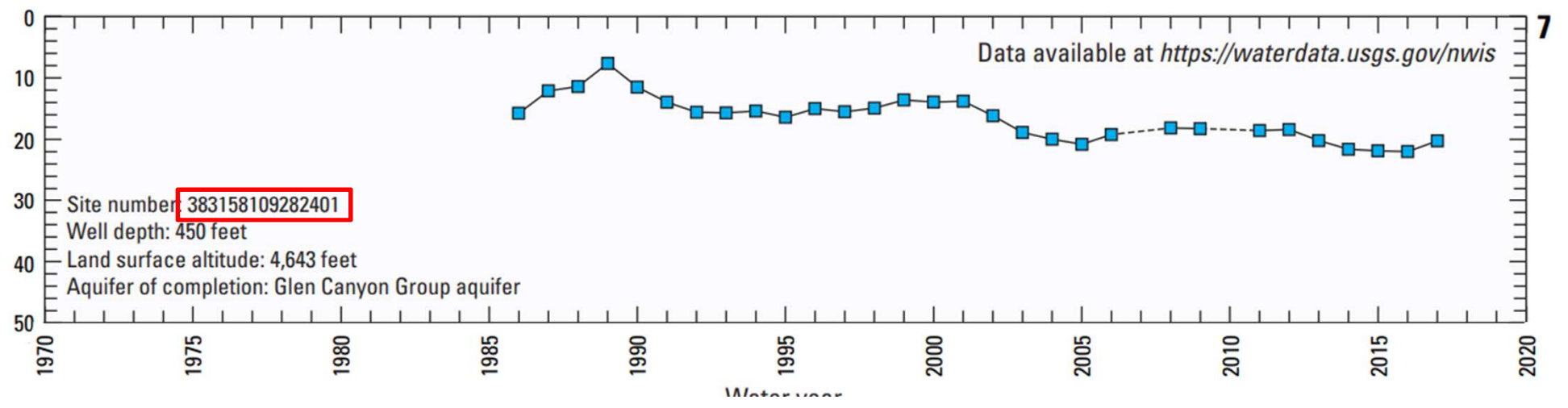
### GS6 Not Currently in Active Network

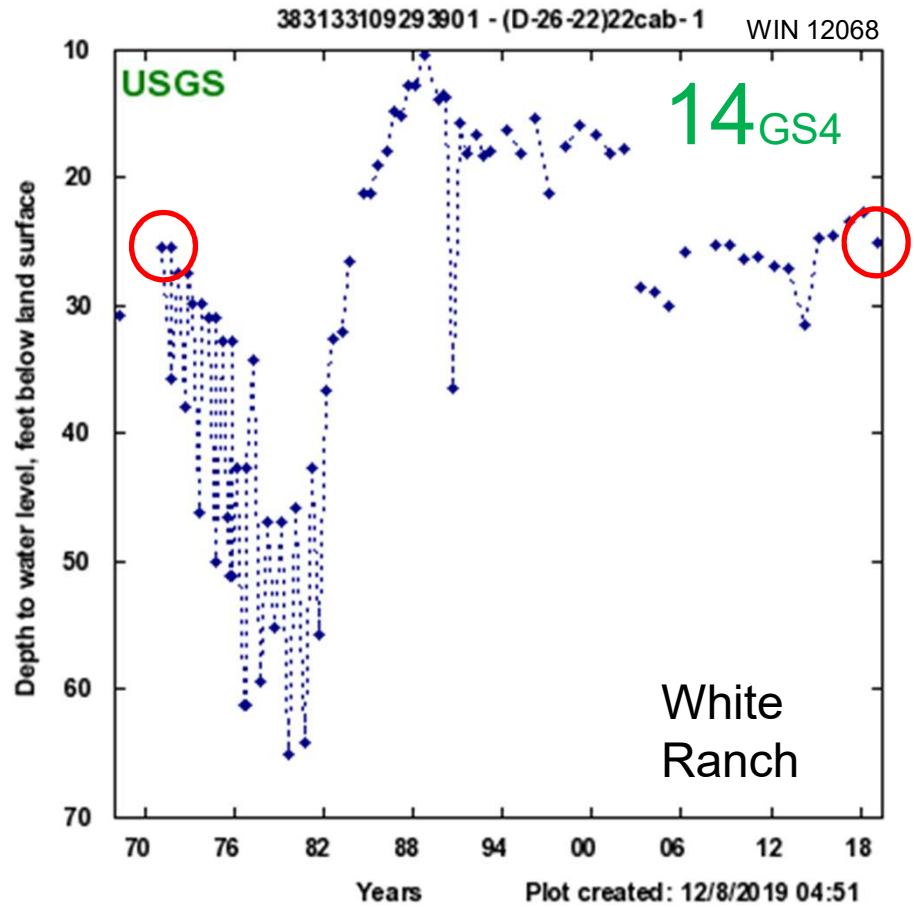
USGS "Evaluation of Groundwater Resources in the Spanish Valley Watershed, Grand and San Juan Counties, Utah"  
Scientific Investigations Report 2019-5062, pg. 54



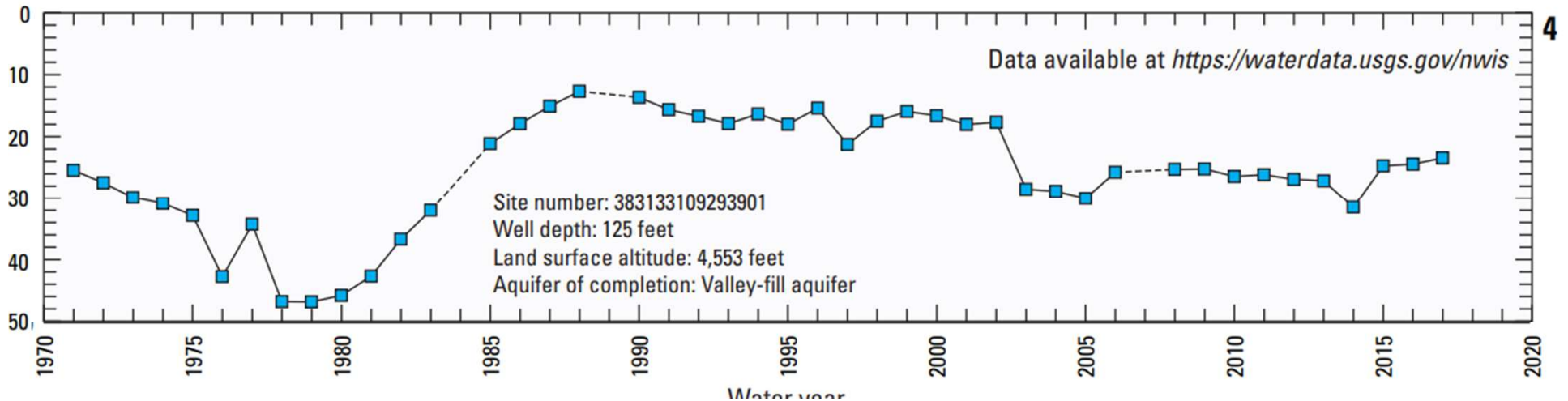


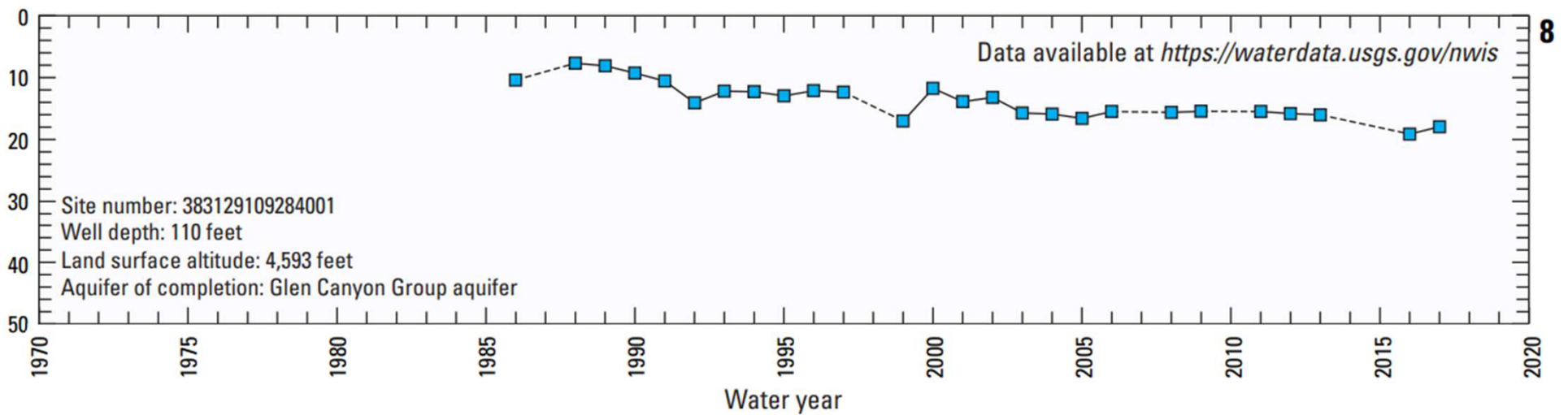
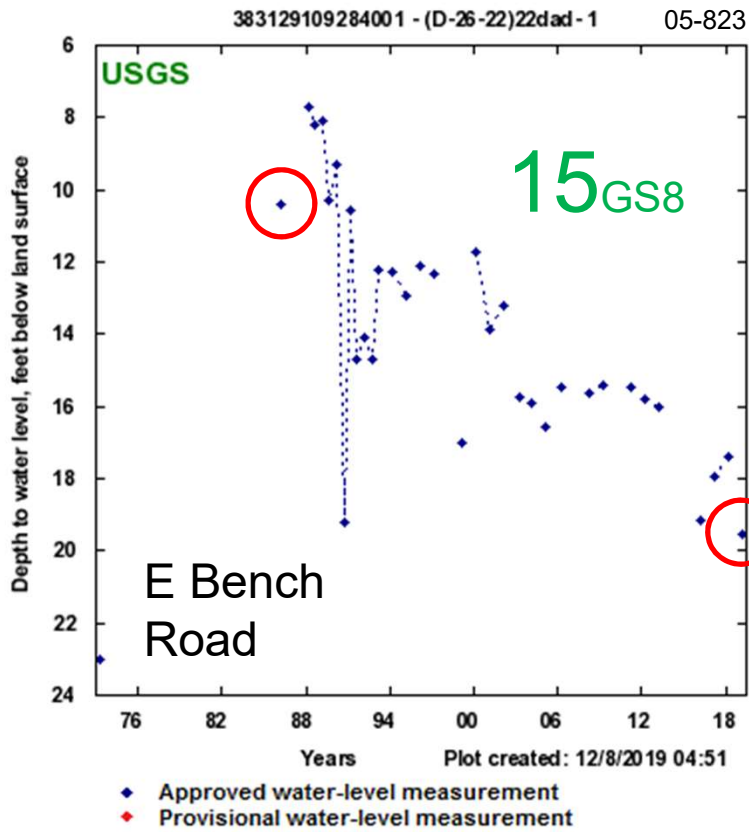
USGS "Evaluation of Groundwater Resources in the Spanish Valley Watershed, Grand and San Juan Counties, Utah"  
 Scientific Investigations Report 2019-5062, pg. 54



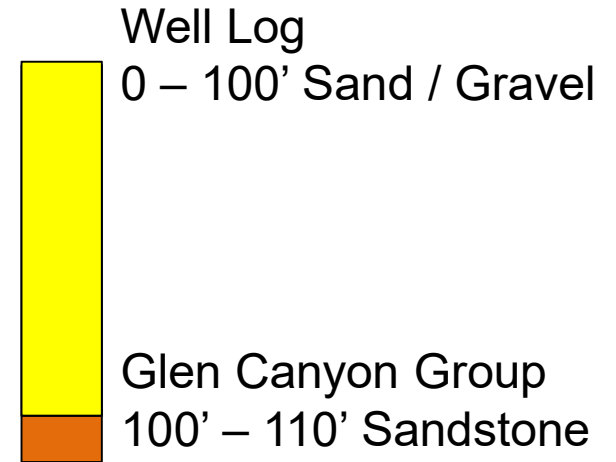
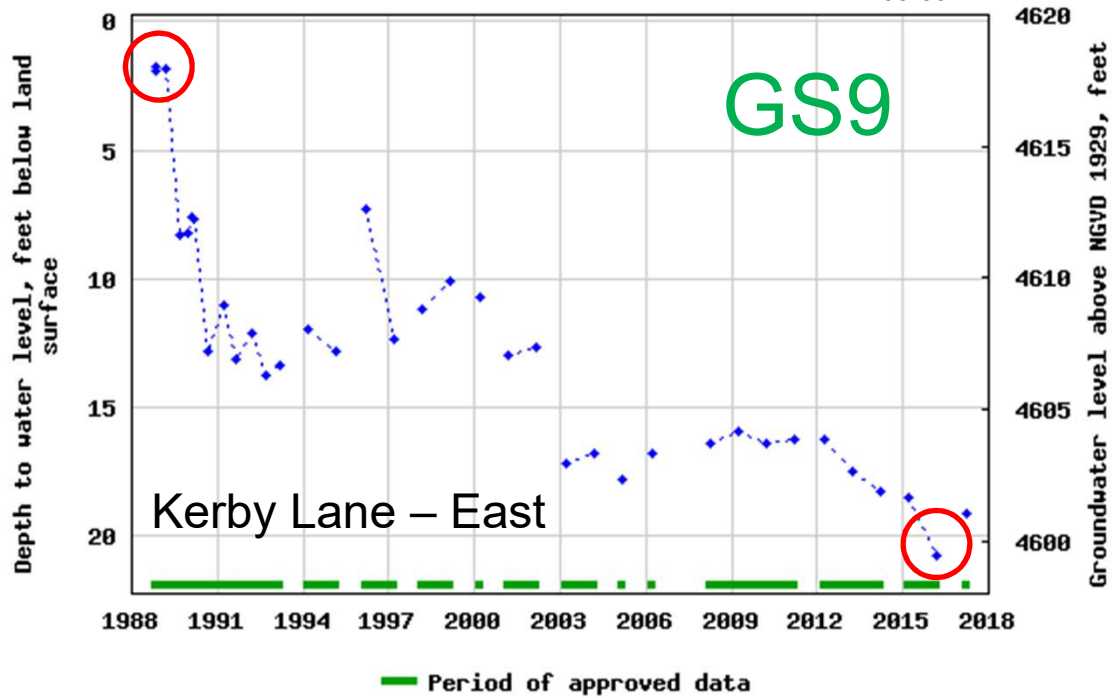


USGS "Evaluation of Groundwater Resources in the Spanish Valley Watershed, Grand and San Juan Counties, Utah"  
 Scientific Investigations Report 2019-5062, pg. 53



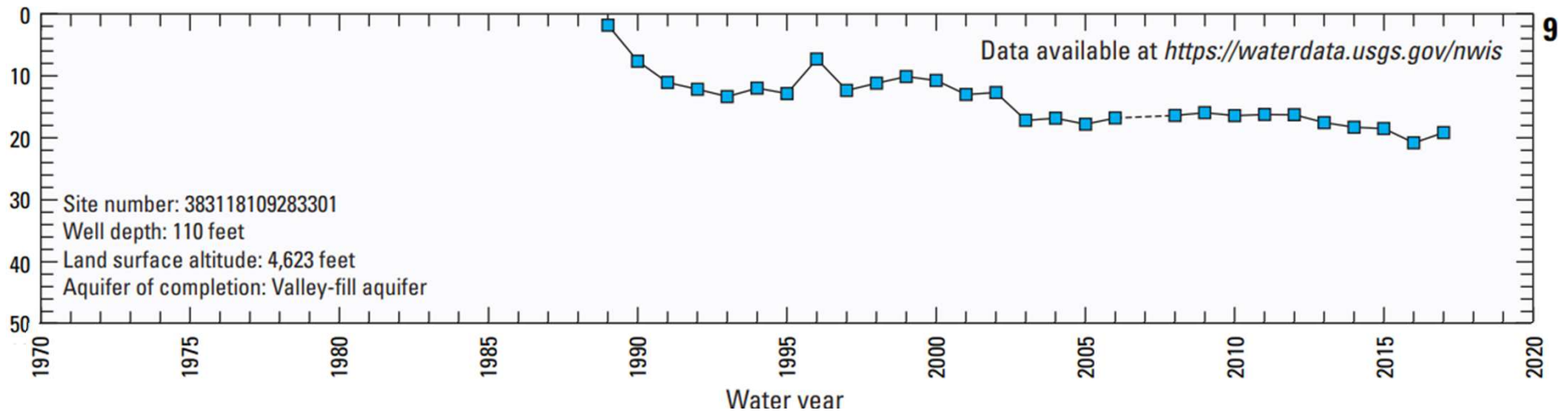


USGS 383118109283301 (D-26-22)23ccb- 2 05-392

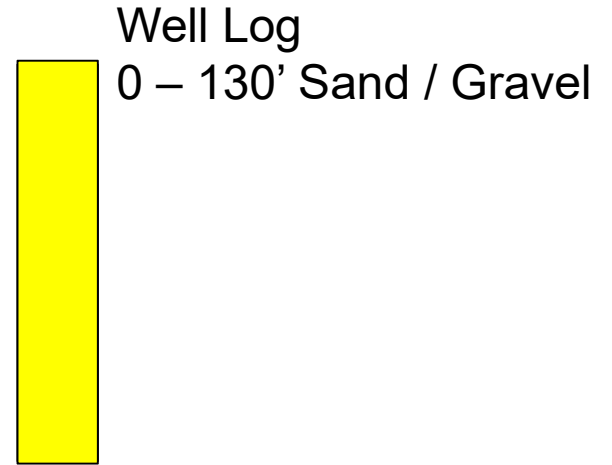
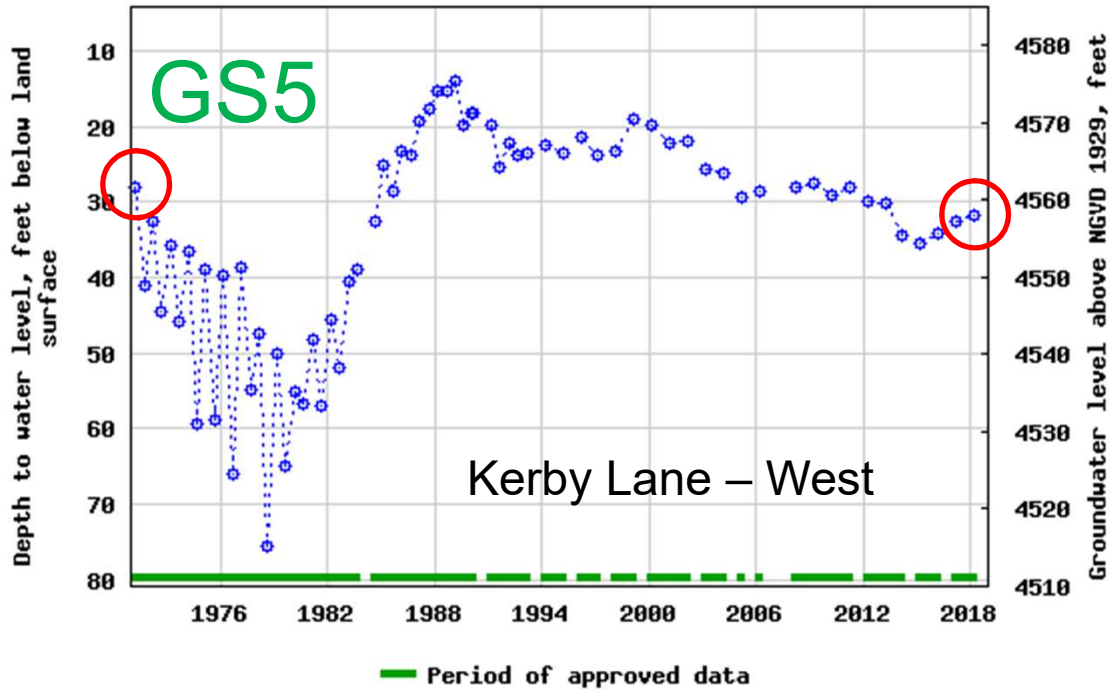


## GS9 Not Currently in Active Network

USGS "Evaluation of Groundwater Resources in the Spanish Valley Watershed, Grand and San Juan Counties, Utah"  
 Scientific Investigations Report 2019-5062, pg. 54

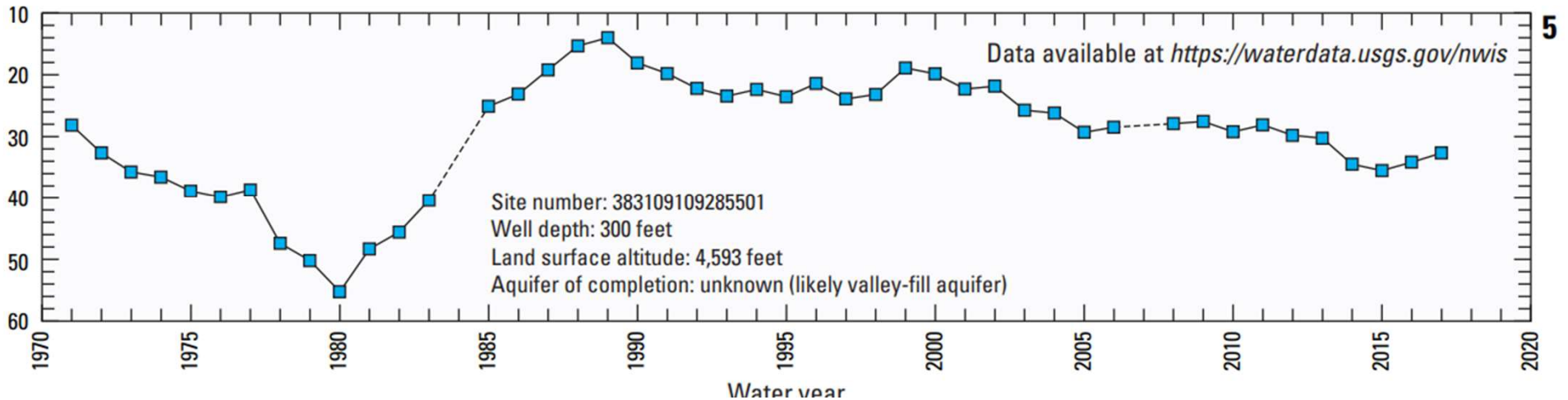


USGS 383109109285501 (D-26-22)22ddc- 2 formerly (D-26-22)27aaa- 1

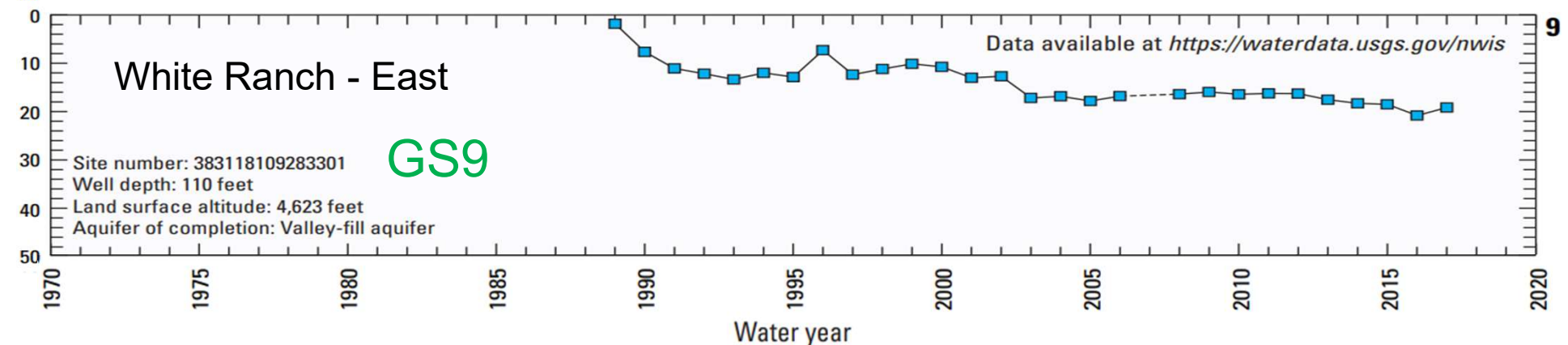
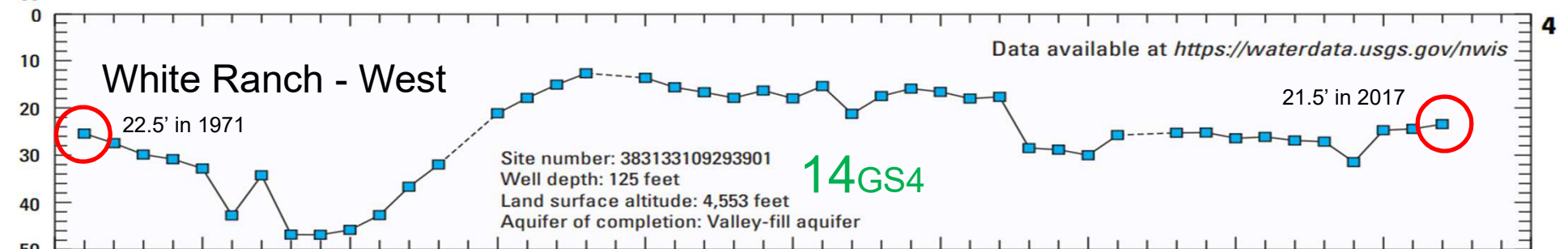
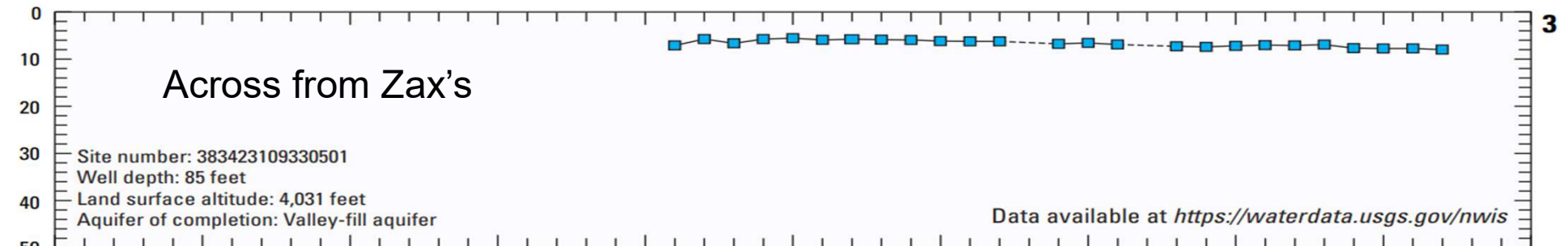
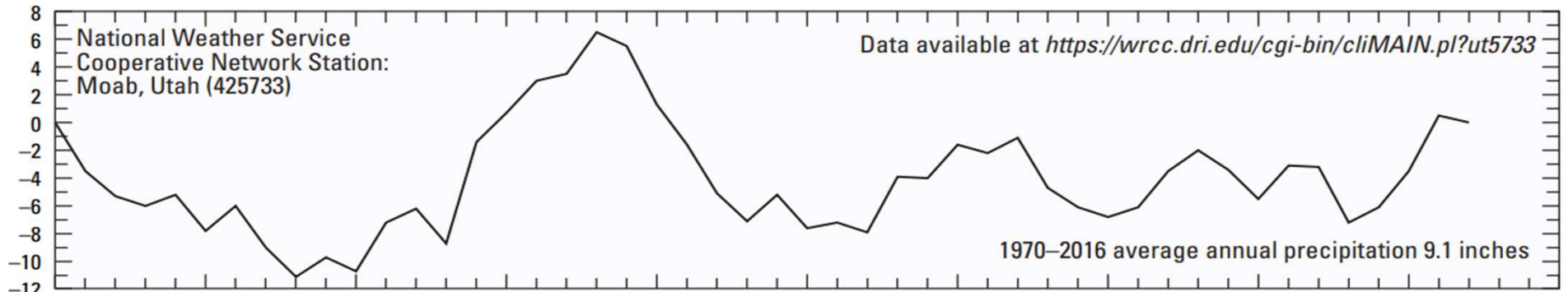


### GS5 Not Currently in Active Network

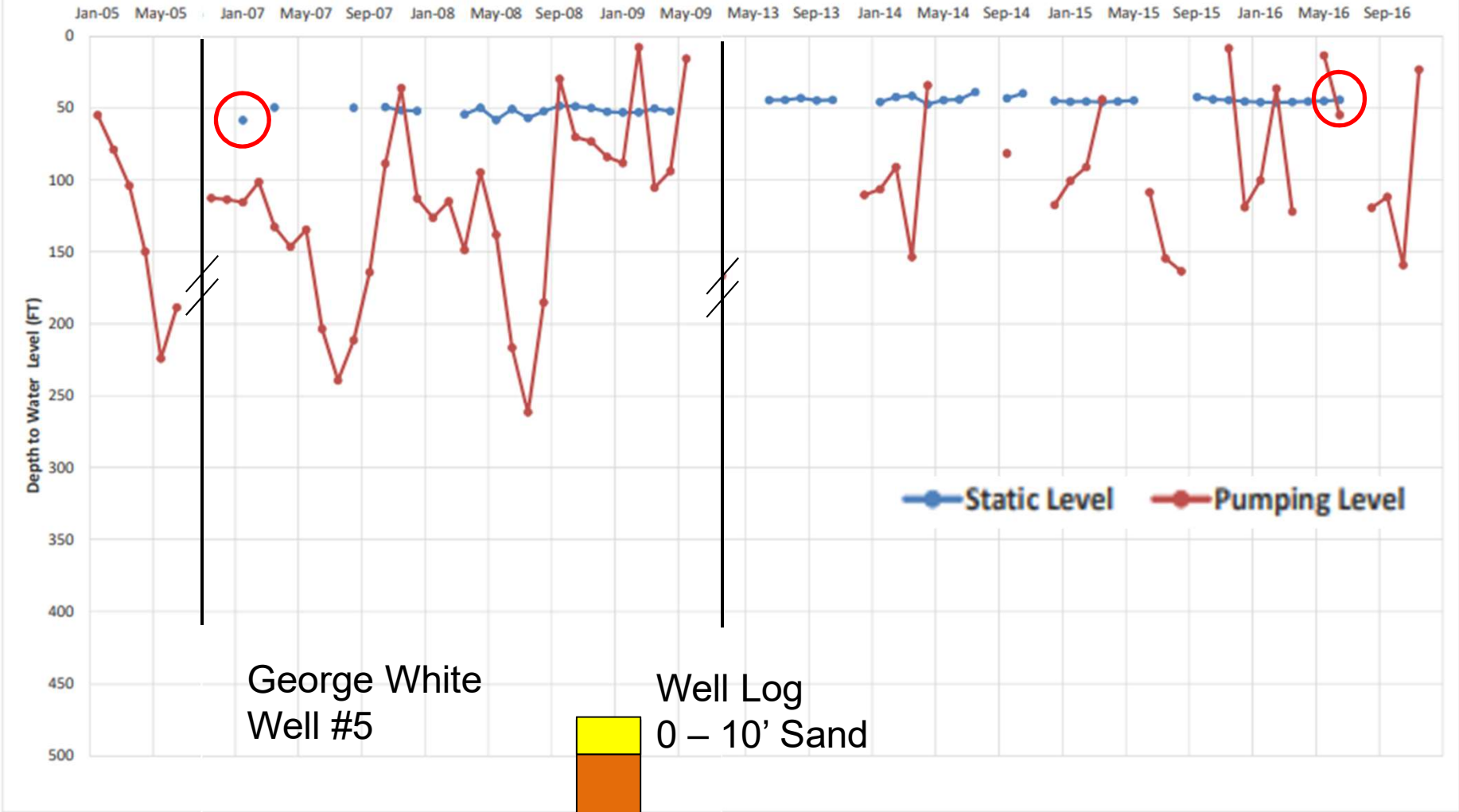
USGS “Evaluation of Groundwater Resources in the Spanish Valley Watershed, Grand and San Juan Counties, Utah”  
Scientific Investigations Report 2019-5062, pg. 53





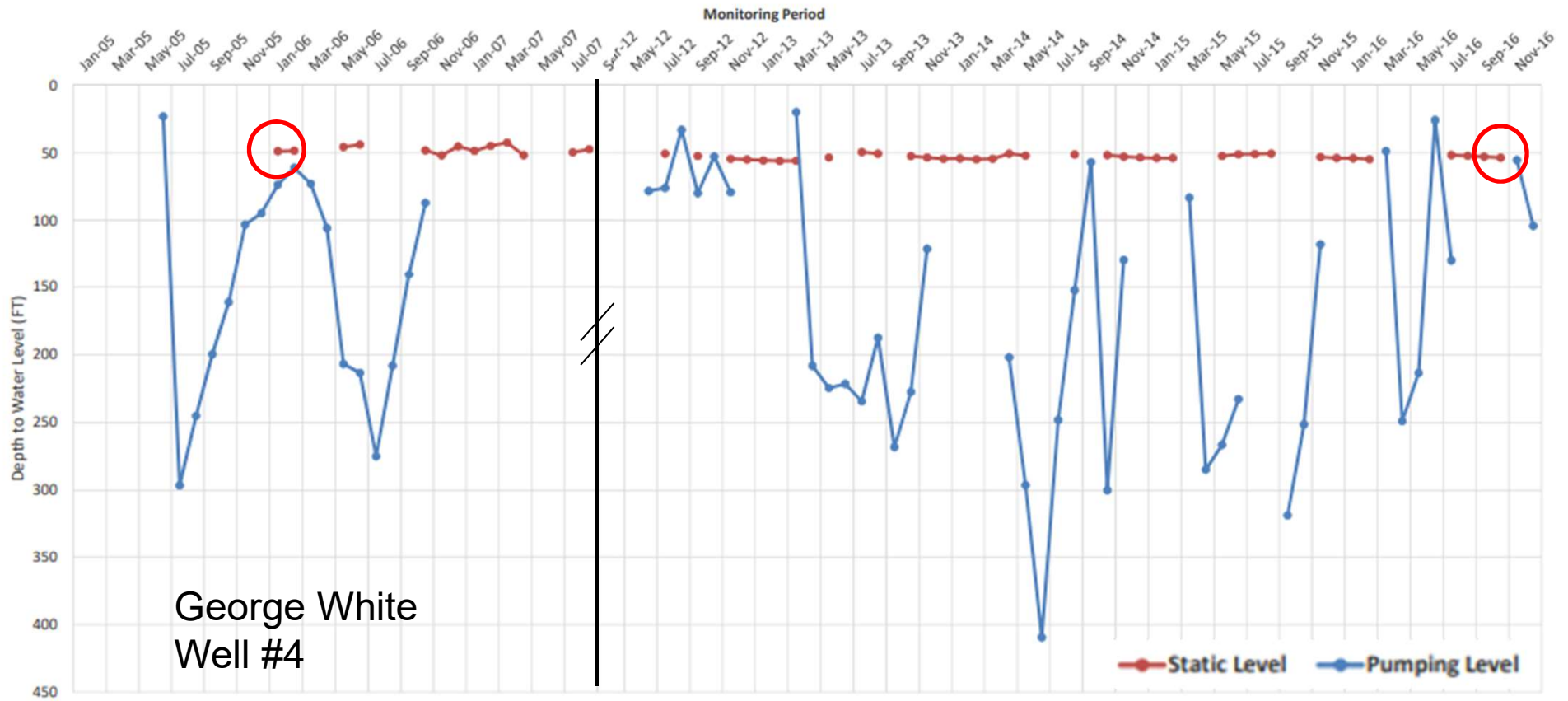


Water year

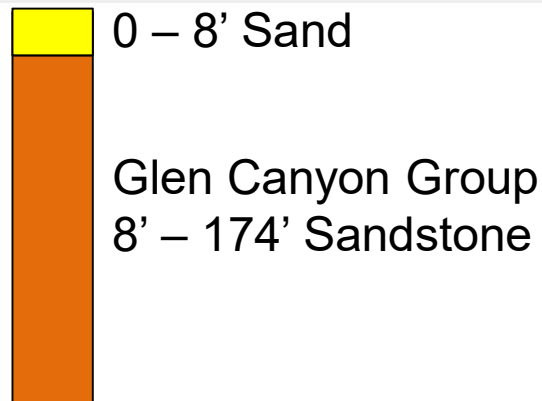


Static Level and Pumping Level Monitoring  
George White Well #4

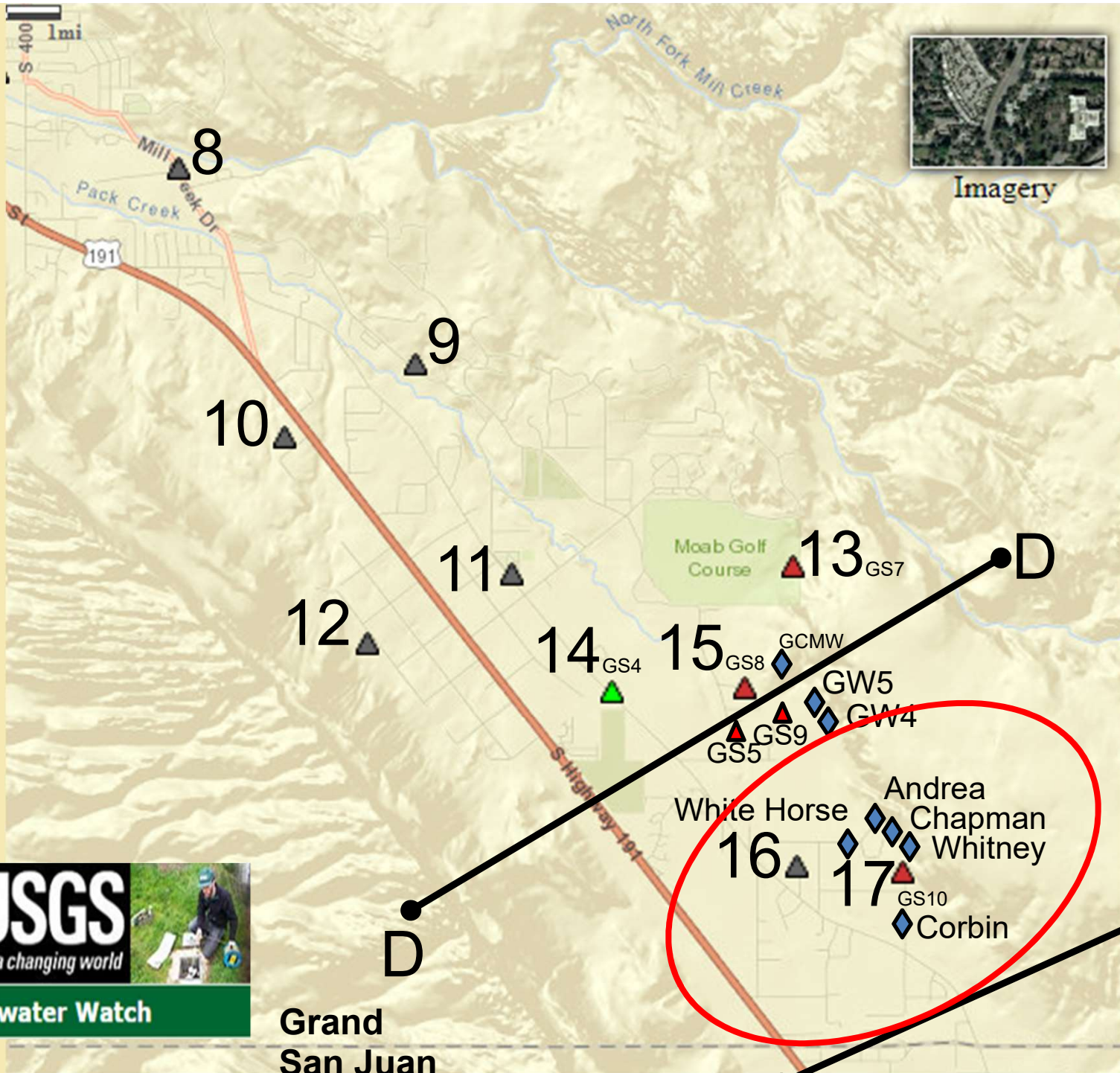
GW4 WIN 12094



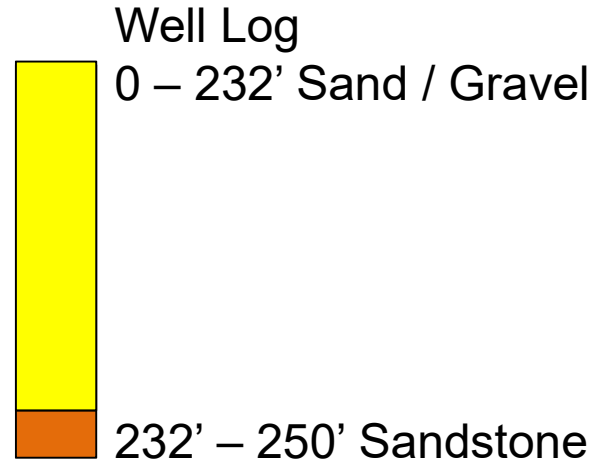
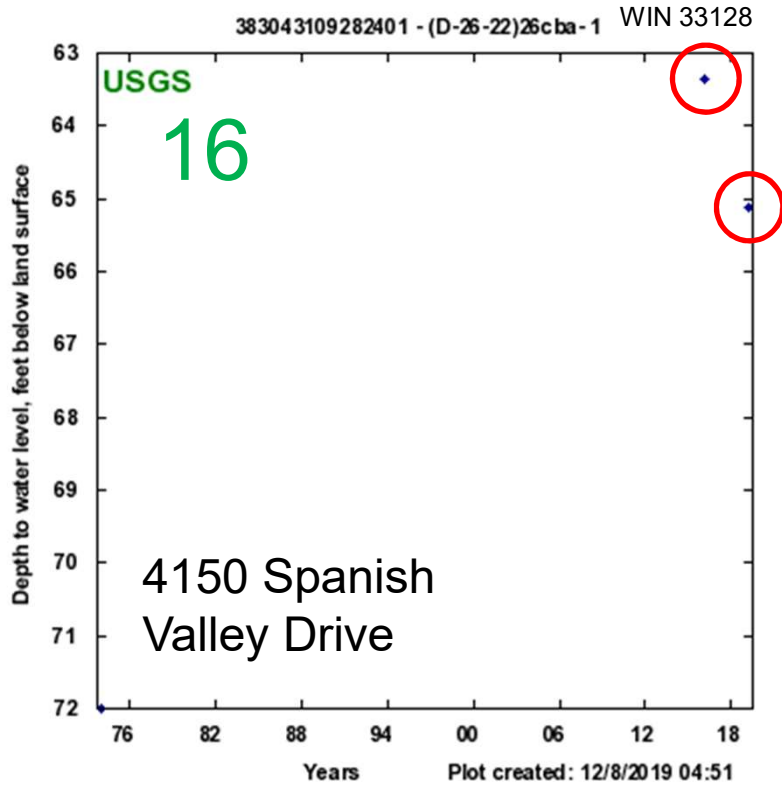
Well Log



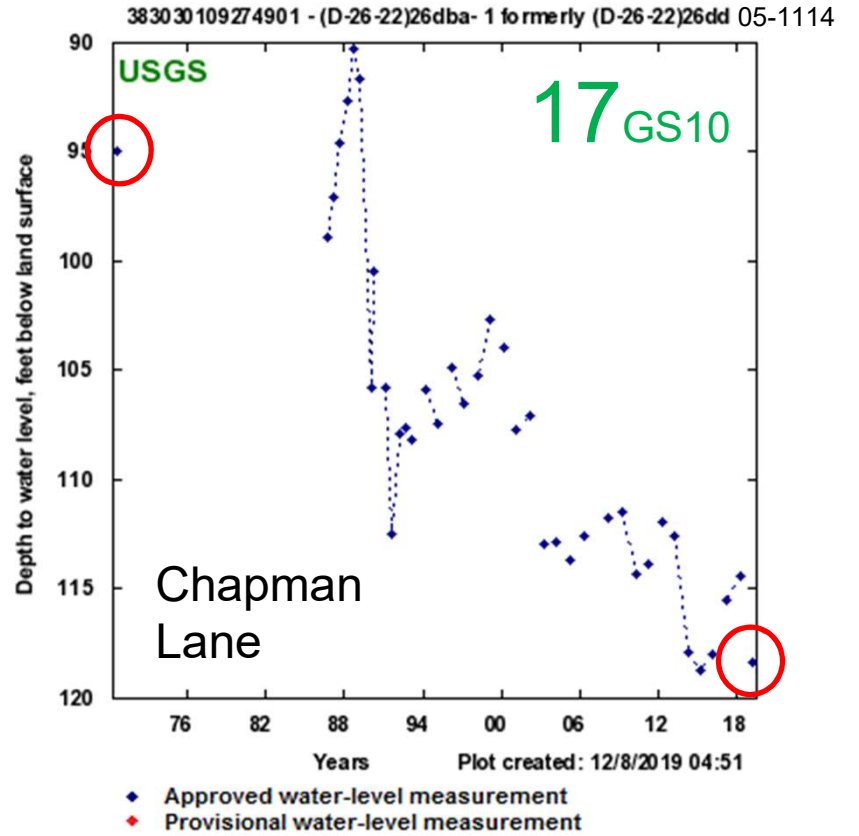
GWSSA "Groundwater Monitoring Report"  
Sunrise Engineering, 2017



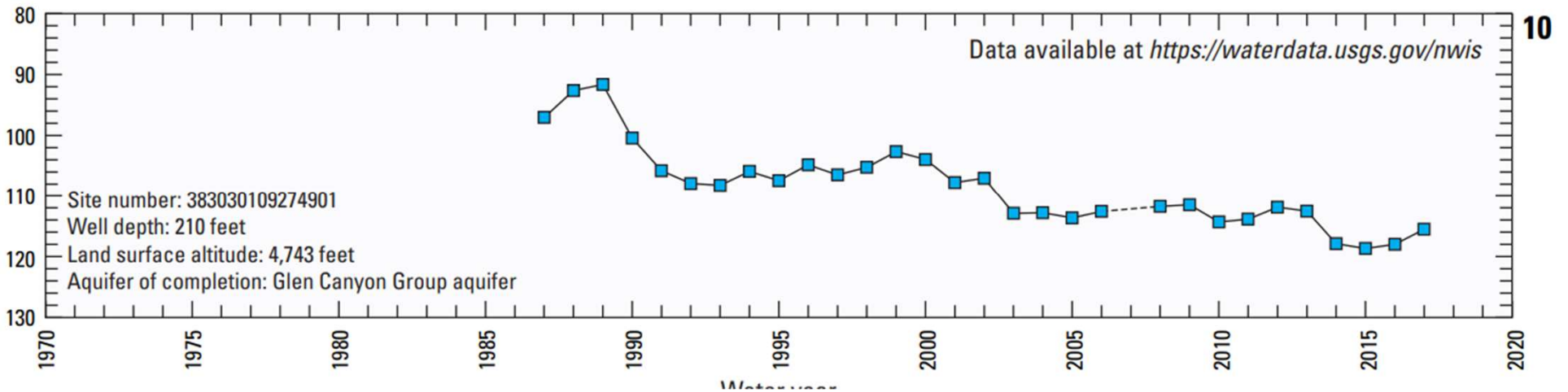
**Grand  
 San Juan**

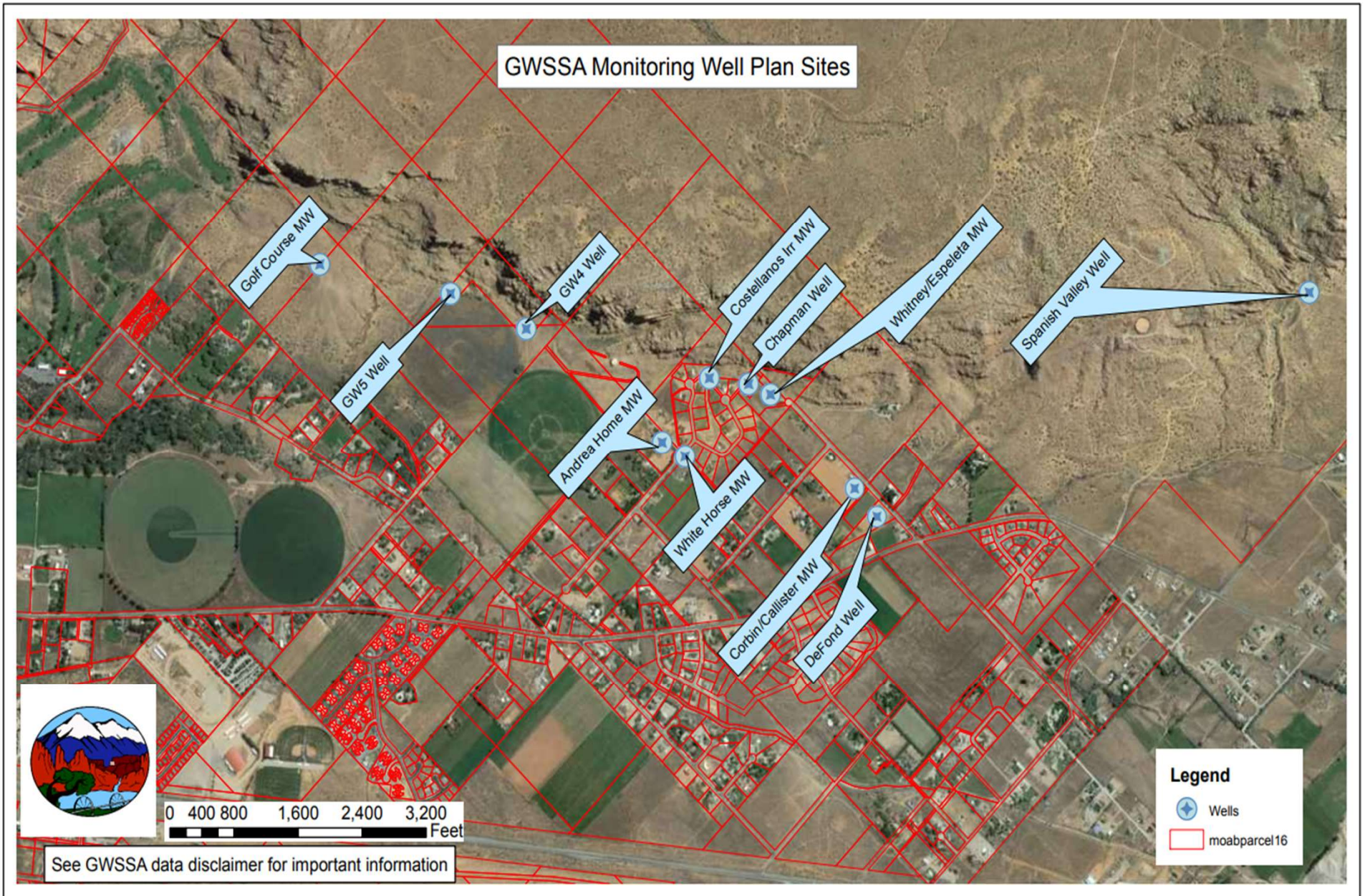


No Well Log



USGS "Evaluation of Groundwater Resources in the Spanish Valley Watershed, Grand and San Juan Counties, Utah"  
 Scientific Investigations Report 2019-5062, pg. 54





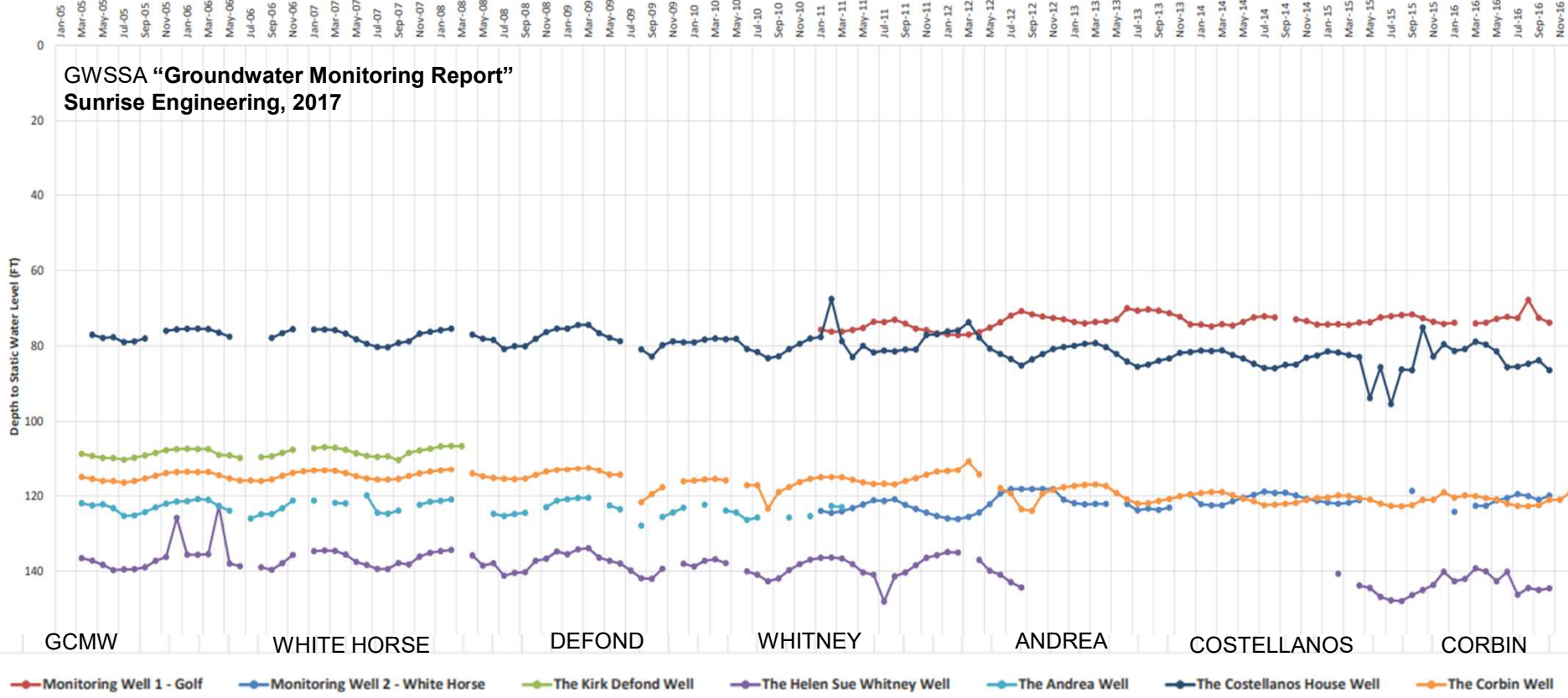
**GWSSA "Groundwater Monitoring Report"**  
**Sunrise Engineering, 2017**

Groundwater Monitoring Data  
From January 2005 to December 2016

2005

2016

Monitoring Period



**GWSSA "Groundwater Monitoring Report"**  
**Sunrise Engineering, 2017**

Depth to Static Water Level (FT)

GCMW

WHITE HORSE

DEFOND

WHITNEY

ANDREA

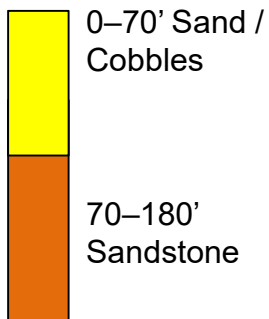
COSTELLANOS

CORBIN

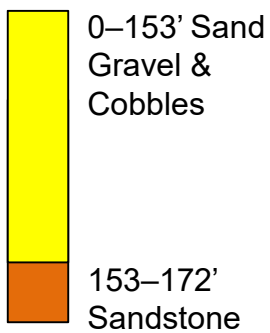
Monitoring Well 1 - Golf    Monitoring Well 2 - White Horse    The Kirk Defond Well    The Helen Sue Whitney Well    The Andrea Well    The Costellanos House Well    The Corbin Well

No Well Log

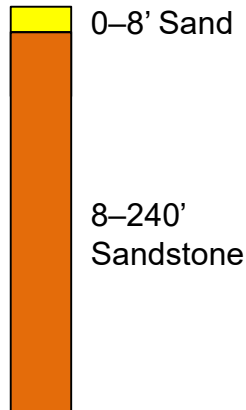
WIN 27616



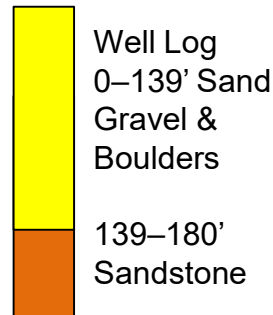
WIN 31762



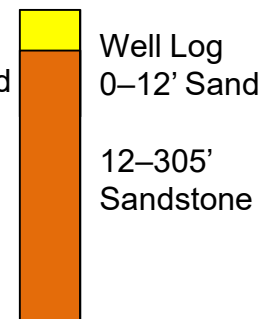
WIN 439917



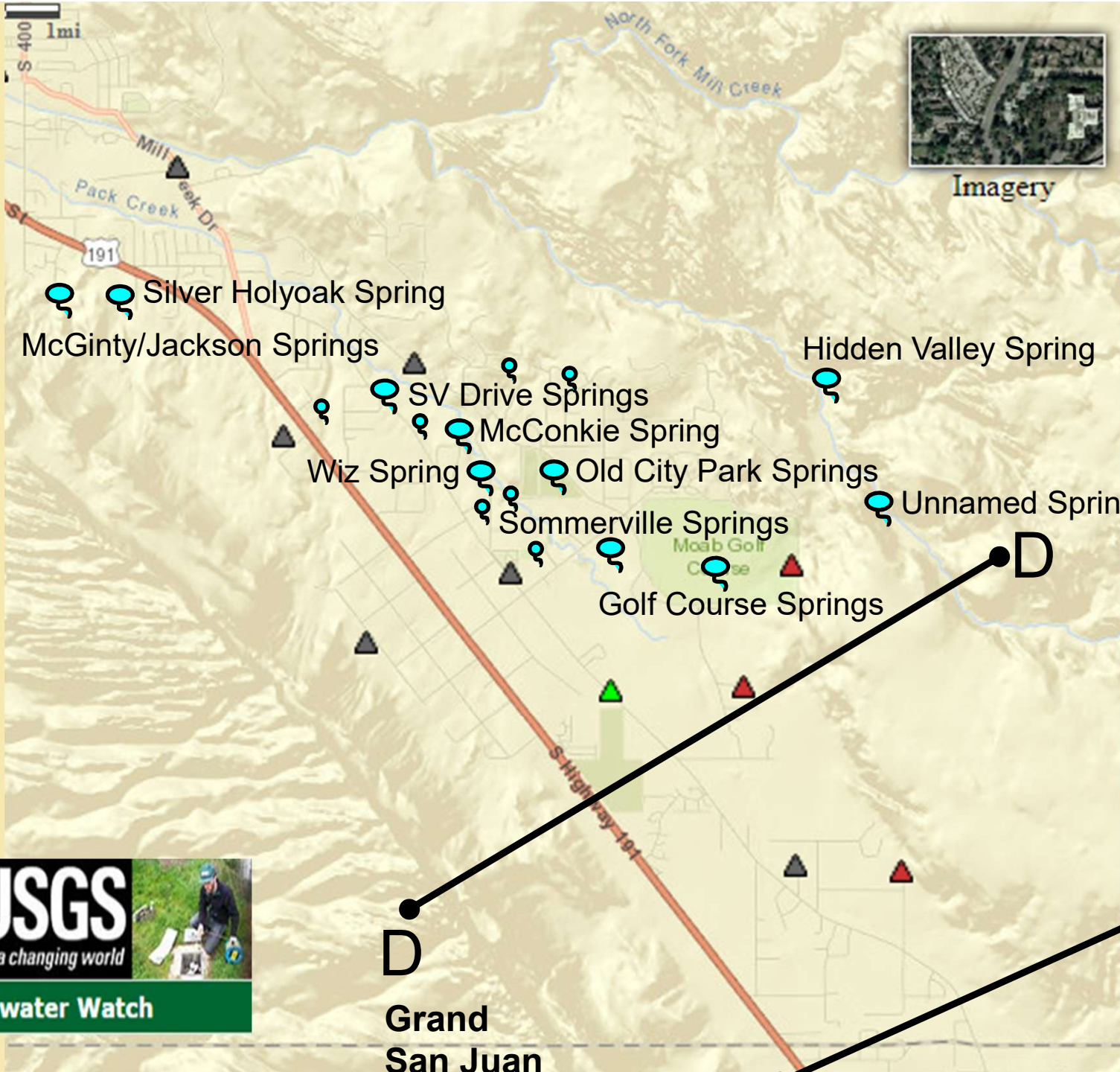
WIN 12079



WIN 23360







Grand  
San Juan

E

# Natural Spring Flows

- No Monitoring on any springs except for the following:
  - Moab - Sommerville Springs
  - Moab – Golf Course Springs



# Thank You... Any Questions?



Utah Division of Water Rights